

- ① 10" IPS-C INSULATED STAINLESS STEEL EXHAUST PIPE - SHALL BE AS MANUFACTURED BY SELKIRK. DOUBLE WALL 5S. INSULATED PIPE WITH WITH 1" SOLID PACK INSULATION. 2" OF INSULATION TO COMBUSTIBLES. COORDINATE WITH AVAILABLE LENGTHS. MANUFACTURER PRIOR TO CONSTRUCTION. INSTALL AS PER MANUFACTURER'S RECOMMENDATIONS.
- ② SEAL RING - SHALL BE A "SELKIRK" MODEL SR. CONTRACTOR SHALL INSURE AN AIRTIGHT CONNECTION FROM EXHAUST PIPE TO OVEN FLUE CONNECTION. INSTALL AS PER MANUFACTURER'S RECOMMENDATIONS.
- ③ CEILING THIMBLE MAINTAINING A MIN. 2" SPACING FROM COMBUSTIBLES SHALL BE A "SELKIRK" MODEL T. FOR IPS-C DUCT. INSTALL AS PER MANUFACTURER'S RECOMMENDATIONS.

* ENTIRE UL LISTED FACTORY BUILT GREASE DUCT SYSTEM SHALL BE AS MANUFACTURED BY SELKIRK AND SHALL CONSIST OF THE COMMERCIAL IPS-C DUCT SYSTEM.

* SELKIRK MODEL IPS S.S. GREASE DUCT IN SIZES 5" THROUGH 48" DIAMETERS HAVE BEEN TESTED AND LISTED (SAFETY CERTIFIED) BY UNDERWRITERS LABORATORIES, INC. (ULI) AND BEARS THE UL AND/OR C-UL LOGO SIGNIFYING COMPLIANCE WITH U.S. AND/OR CANADIAN STANDARDS. UL LISTING PRODUCT CATEGORIES INCLUDE: (USA) GREASE DUCT (UL1978), TYPE L VENT (UL641) AND (INDUSTRIAL) 1400° F CHIMNEY (UL103)

[illegible]

18 GA. GALVANIZED METAL GOOSENECK WITH SOLDERED SEAMS, SECURE TO ROOF CURB WITH SHEET METAL SCREWS

REMOVABLE TOP - PROVIDE WITH TURN DOWN LIP ON 3 SIDES

SECURE TOP WITH SHEET METAL SCREWS

TOP DIMENSIONS OF L LONG BY W WIDE (SEE TABLE BELOW)

3" HIGH RAIN STOP ACROSS FULL WIDTH

OPENING TO BE H HIGH (SEE TABLE)

SECURE LIQUID LINE & SUCTION LINE TOGETHER. PROVIDE PROTECTION FOR INSULATION AS PER MANUF. RECOMMENDATIONS

SECURE LINE TO SLEEPERS

GOOSENECK TO OVERLAP ROOF CURB BY 3" MIN

18 GA GALVANIZED METAL ROOF CURB

P.T. CANT STRIP

15"

PROVIDE 4X4 PT WOOD SLEEPERS AT 5'-0" O.C. MAXIMUM. SECURE SLEEPERS TO ROOFING SURFACE WITH ROOF CEMENT

2 REFRIG. GOOSENECK DETAILS

LABEL	TYPE OF UNIT – AREA SERVED	MANUFACTURER & MODEL NO.	GPM	SP	MOUNTING ARRANGEMENT	MOTOR H.P.	ENCLOSURE TYPE	RPM	VOLTAGE	NOTES
EF-1,2	REFER TO HOOD EXHAUST SPECIFICATIONS AND DETAILS ON SHEET M-4.	—	—	—	—	—	—	—	—	—
EF-3,4	CABINET FAN – REFER TO PLANS	PENN ZEPHYR 27	190	.125"	CEILING MOUNTED	68 WATTS	OPEN DRIP PROOF	1640	115V/1ø	1
EF-5	SHUTTER FAN – REFER TO PLANS	ACME SMF 07-SC	140	.125"	WALL MOUNTED	1/30	OPEN DRIP PROOF	1115	115V/1ø	1
EF-6	WALL FAN – REFER TO PLANS	PENN P10VA	450	.125"	WALL MOUNTED	1/30	OPEN DRIP PROOF	1050	115V/1ø	1,2,3
EF-7	WALL FAN – REFER TO PLANS	PENN P10RA	630	.125"	WALL MOUNTED	1/12	OPEN DRIP PROOF	1550	115V/1ø	1,2,3
EF-8	ROOF FAN – REFER TO PLANS	WOOD STONE WS-GSV-012	50-600	.125"	ROOF MOUNTED	1.4 A	OPEN DRIP PROOF	—	115V/1ø	1,2,3

MECHANICAL LAYOUT DRAWING OF A KITCHEN AREA, INCLUDING EQUIPMENT, DUCTWORK, AND EXHAUST SYSTEMS.

EQUIPMENT AND FEATURES:

- DRINK MACHINE
- GAS/WOOD STONE HEARTH OVEN (80,500 BTUH)
- HOOD #1
- HOOD #2
- FIRE SUPPRESSION PULL STATION
- W/D (Washing/Drying)
- 4" DRYER VENT UP THRU ROOF TO ROOF CAP.
- REFRIGERANT GOOSENECK. SEE DETAIL.
- TANKLESS GAS WATER HEATER.
- REFER TO VENT/INTAKE COMBUSTION AIR DETAIL ON THIS SHEET.
- 16x8 "POTTERFF" MODEL EBV-445 EXHAUST BRICK VENT.
- 10X10
- 10X6
- 10X8
- 12X12 DOOR-GRILLE.
- LOUVERED DOORS.
- A/C #2A MTD. HIGH ON WALL.
- A/C #2B MTD. HIGH ON WALL.
- EF-5 WALL MTD.
- EF-4 CLG. MTD.
- EF-3 CLG. MTD.
- EF-2 WALL MTD. 8" A.F.F. (630 CFM)
- EF-1 WALL MTD. 8" A.F.F. (450 CFM)
- EF-6 WALL MTD. 8" A.F.F. (450 CFM)

DUCTWORK AND EXHAUST SYSTEMS:

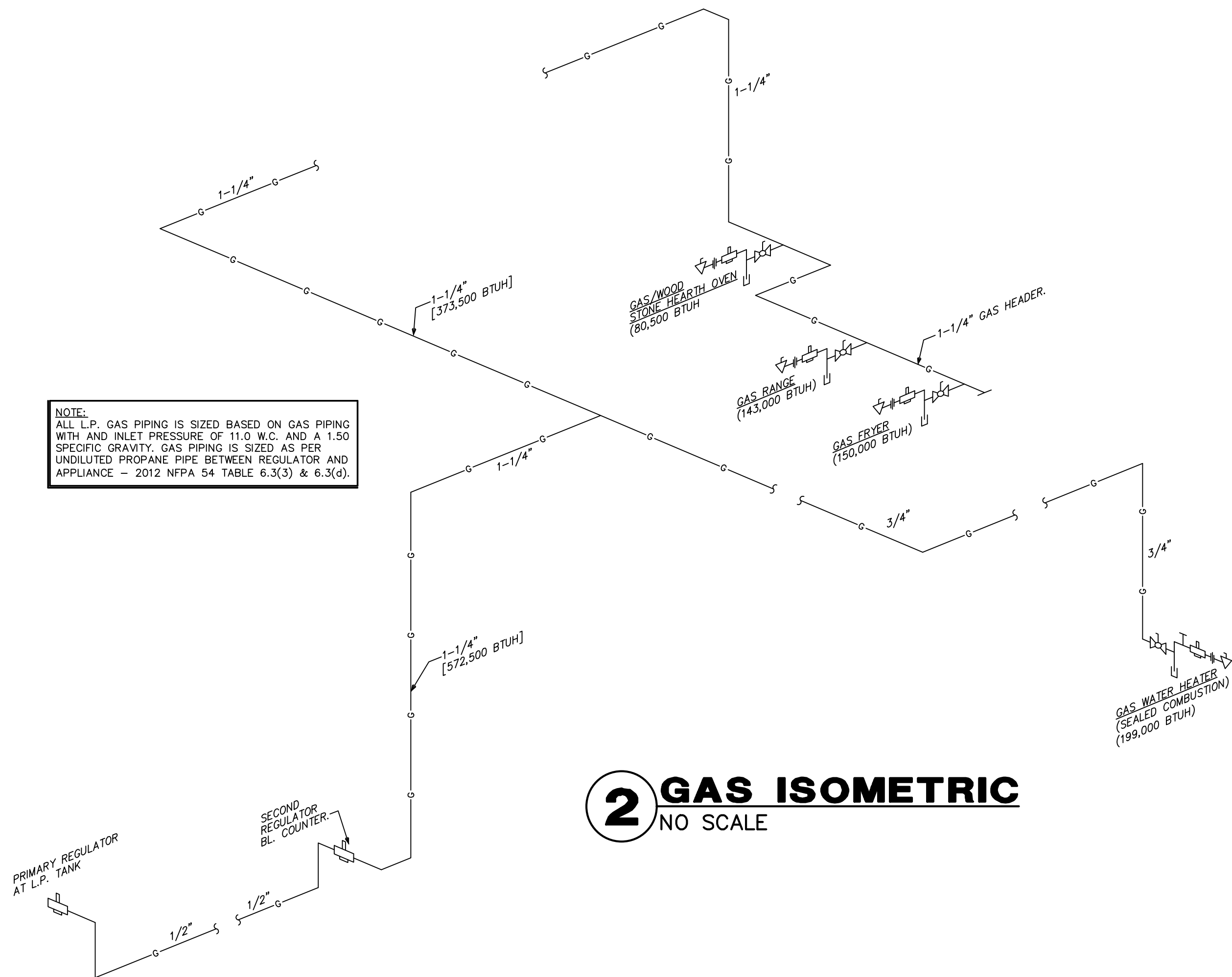
- 10" DOUBLE WALL S.S. INSULATED EXH. PIPE WITH 1" SOLID PACK INSULATION UP TO HI-TEMP EXH. FAN ON ROOF.
- 12" EXH. DUCT UP THRU STOR. RM. ABV.
- 3" EXH. DUCT
- 4-1/2" EXH. DUCT

NOTES:

- SPEED CONTROLLERS FOR PIZZA OVEN WALL FAN. SPEED CONTROLLER INTERLOCKED WITH FAN. (TYP. OF 4) SPEED CONTROLLER CAPABLE OF ON/OFF AND MODULATING FAN FROM 50 CFM - 600 CFM. REFER TO PLAN FOR LOCATION. INSTALL AS PER MANUFACTURER'S RECOMMENDATIONS.
- REMOTE FIRE SUPPRESSION BOX. REFER TO TYP. ANSUL R102 SYSTEM DETAIL ON SHEET M-4.

SCALE: 1/4"=1'-0"

M1



NOTE:
ALL L.P. GAS PIPING IS SIZED BASED ON GAS PIPING WITH AN INLET PRESSURE OF 11.0 W.C. AND A 1.50 SPECIFIC GRAVITY. GAS PIPING IS SIZED AS PER UNDILUTED PROPANE PIPE BETWEEN REGULATOR AND APPLIANCE - 2012 NFPA 54 TABLE 6.3(3) & 6.3(4).

2 GAS ISOMETRIC

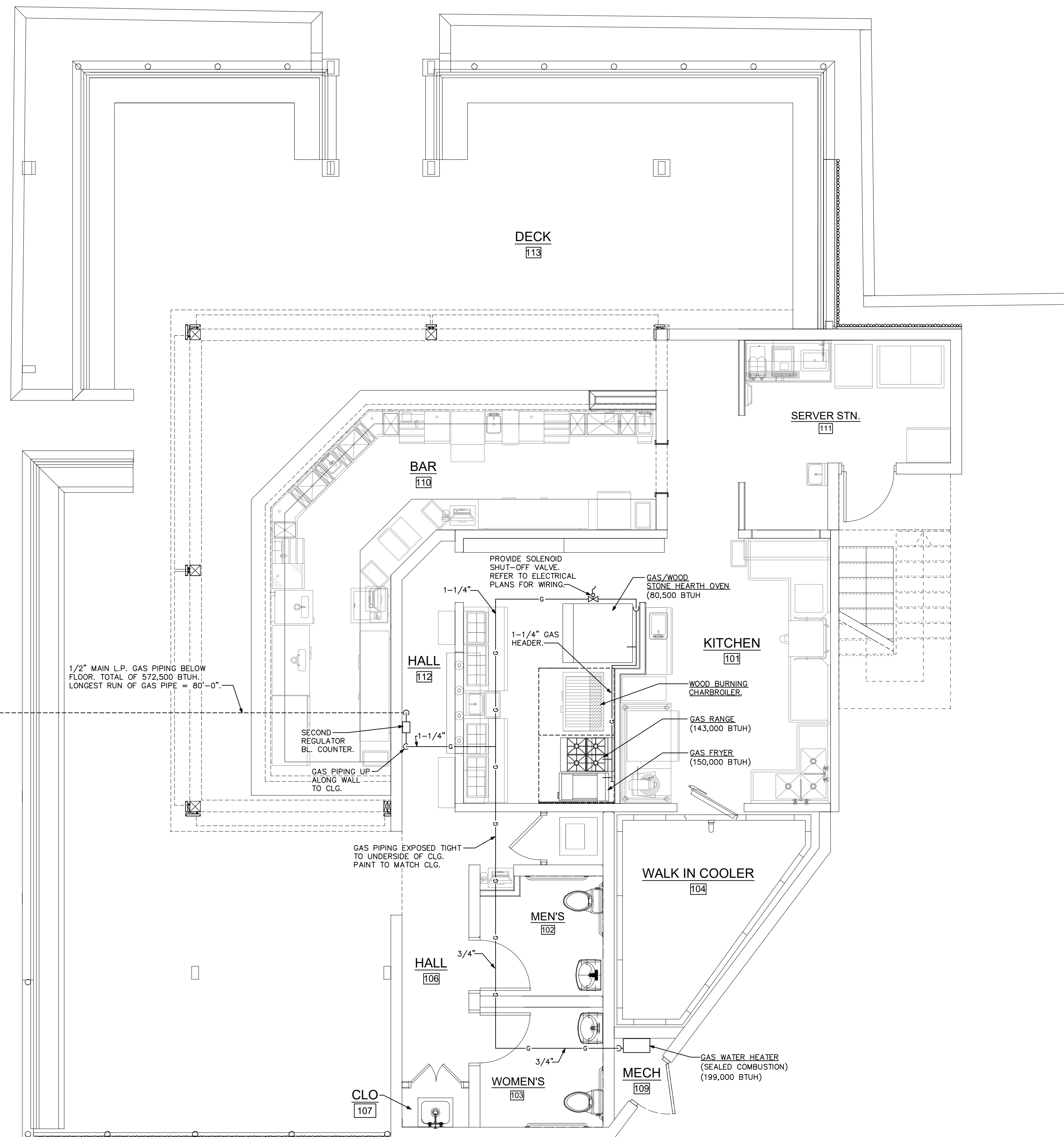
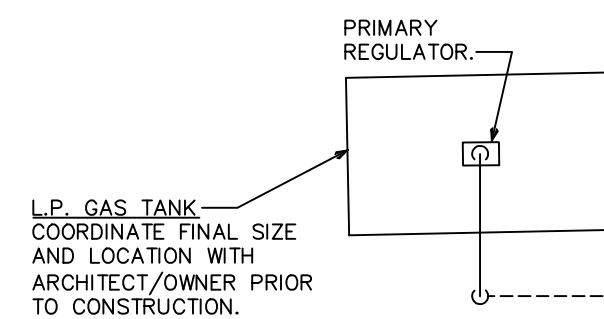
NO SCALE

GENERAL GAS PIPING NOTES

1. GAS PIPING AND FITTINGS SHALL BE SEAMLESS BLACK STEEL WITH MALLEABLE IRON FITTINGS. DIELECTRIC COUPLINGS OR UNIONS SHALL BE UTILIZED WHEN PIPING OF DISSIMILAR METAL IS CONNECTED. GAS PIPING OUTSIDE THE BUILDING SHALL BE PAINTED WITH BLACK "RUSTOLEUM" PAINT.
2. GAS PIPING SYSTEM SHALL BE INSTALLED TO THE REQUIREMENTS OF THE AGA PAMPHLET "INSTALLATION OF GAS APPLIANCES AND GAS PIPING" AND THE NFPA STANDARD #54. THE CONTRACTOR SHALL MAKE ALL ARRANGEMENTS AND PAY ALL FEES WITH THE "LOCAL" GAS COMPANY FOR THE INSTALLATION OF THE GAS METER, GAS SERVICE, AND ITS ACCESSORIES NECESSARY FOR A COMPLETE SYSTEM.
3. GAS PIPING SHALL BE TESTED IN ACCORDANCE WITH THE PROCEDURES DESCRIBED IN NFPA #54, AND ANY OTHER TESTS REQUIRED BY THE LOCAL BUILDING DEPARTMENT AND/OR THE LOCAL GAS UTILITY COMPANY.
4. THE INSTALLING SUBCONTRACTOR SHALL BE LICENSED BY THE STATE FOR THE INSTALLATION OF GAS PIPING.
5. RUNOUT PIPING, FROM THE MAIN PIPING TO APPLIANCES, SHALL BE WITH AN INVERTED TRAP CONNECTION AT THE MAIN.
6. A 12" DIRT LEG, AND A GAS COCK, SHALL BE PROVIDED AT ALL GAS APPLIANCES.
7. ALL EXPOSED GAS PIPING SHALL BE IDENTIFIED BY A YELLOW LABEL MARKED "GAS" IN BLACK LETTERS. THE MARKERS SHALL BE AT INTERVALS NOT EXCEEDING 5'.

GAS PIPE LEGEND

	BALL VALVE
	DRIP LEG
	REGULATOR/OPD AS REQUIRED
	UNION
	QUICK DISCONNECT

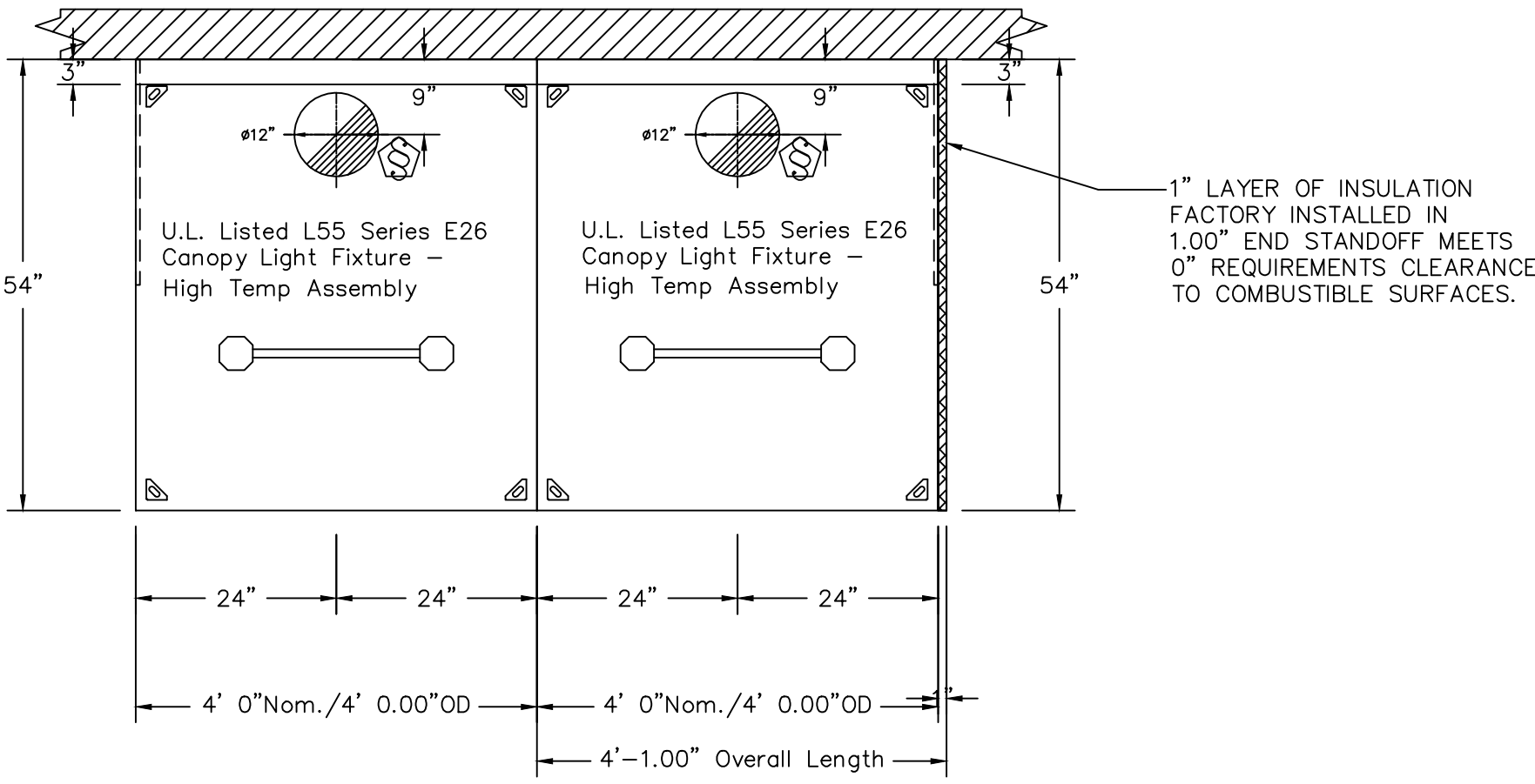


1 FLOOR PLAN - GAS PIPING

SCALE: 1/4"=1'-0"

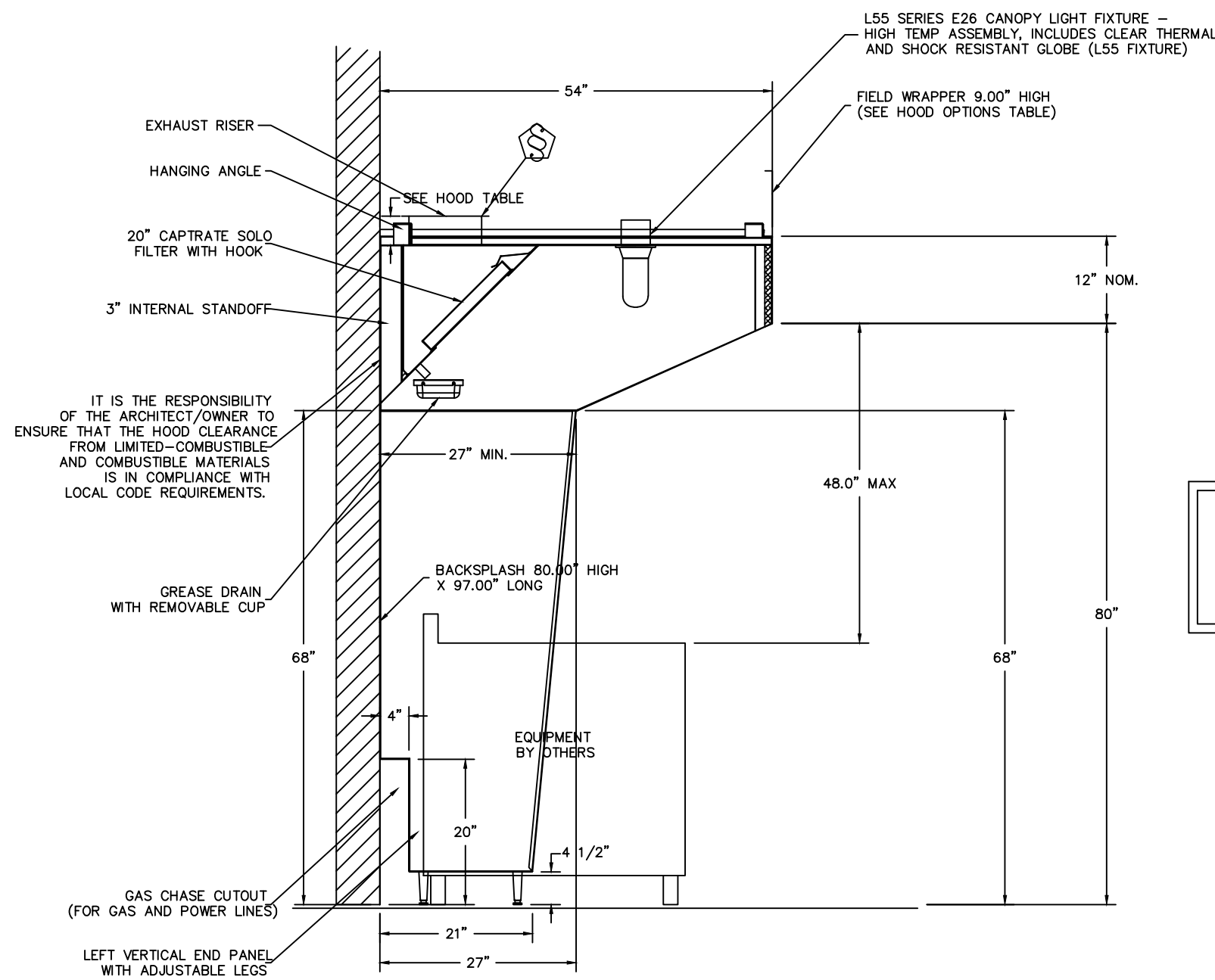
REV.	DATE	DESCRIPTION

M2

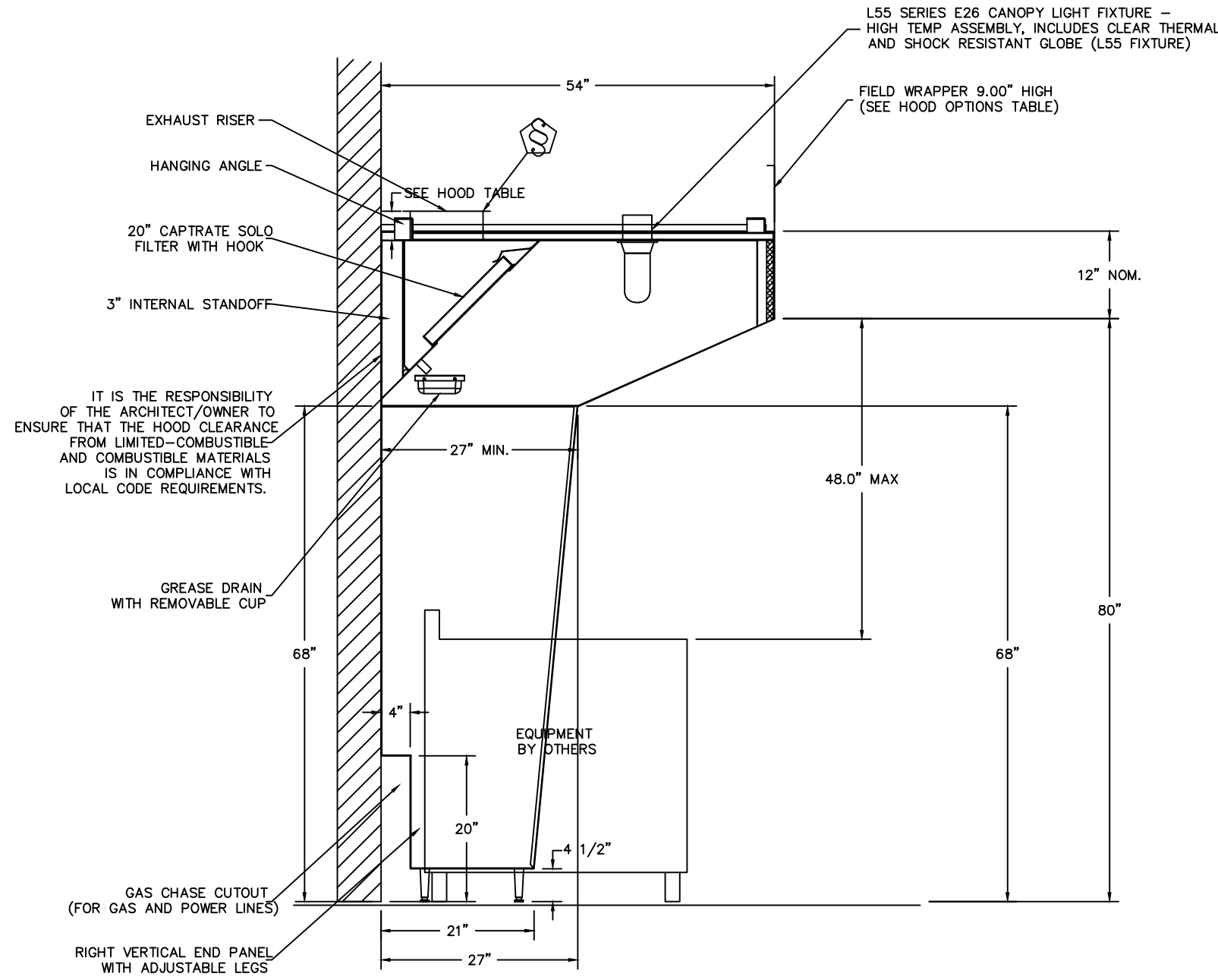


PLAN VIEW - Hood #1
4' 0.00" LONG 5412SND-2

PLAN VIEW - Hood #2
4' 0.00" LONG 5412SND-2



SECTION VIEW - MODEL 5412SND-2
HOOD - #1



SECTION VIEW - MODEL 5412SND-2
HOOD - #2

FOR QUESTIONS, CALL THE
CHARLOTTE, NORTH CAROLINA
AVERY GRANT
PHONE: 704-844-9088, FAX: 704-844-0599
EMAIL: reg30@captiveair.com

CAPTIVEAIR



AIR COOLED AIR CONDITIONING UNIT SCHEDULE															
CONDENSING UNIT								INDOOR UNIT							
CU LABEL(S)	MANUFACTURER & MODEL NO.	TOTAL CAPACITY COOLING	TOTAL CAPACITY HEATING	VOLTAGE	MOCP	SEER	WEIGHT	AHU LABEL(S)	MANUFACTURER & MODEL NO.	TOTAL CFM	FAN FLA	BLOWER SPEED	VOLTAGE	WEIGHT	NOTES
CU #1	DAIKIN MUY-GL15NA-U1	14,000	—	208V/1Ø	15A	13.0	96 lbs.	A/C #1	DAIKIN MSY-GL15NA-U1	170 – 533	0.76	5-SPEED	115V/1Ø	37 lbs.	1,2,3
CU #2	DAIKIN MXZ-2C20NA2	6,000–20,000	—	208V/1Ø	20A	20.0	139 lbs.	A/C #2A	DAIKIN MSZ-GL06NA-U1	145 – 399	0.76	5-SPEED	115V/1Ø	22 lbs.	1,2,3
								A/C #2B	DAIKIN MSZ-GL06NA-U1	145 – 399	0.76	5-SPEED	115V/1Ø	22 lbs.	1,2,3

SPECIFIC NOTES:

- 1) SIZE AND RUN REFRIGERANT PIPING AS PER MANUFACTURERS PUBLISHED RECOMMENDATIONS.
- 2) INSULATE REFRIGERANT SUCTION LINE WITH 3/4" ARMAFLEX OR APPROVED EQUAL.
- 3) POWER SUPPLY IS TO OUTDOOR UNIT, INTERCONNECTING WIRING FROM OUTDOOR UNIT TO INDOOR UNIT. REFER TO ELECTRICAL PLANS FOR CONTROL.

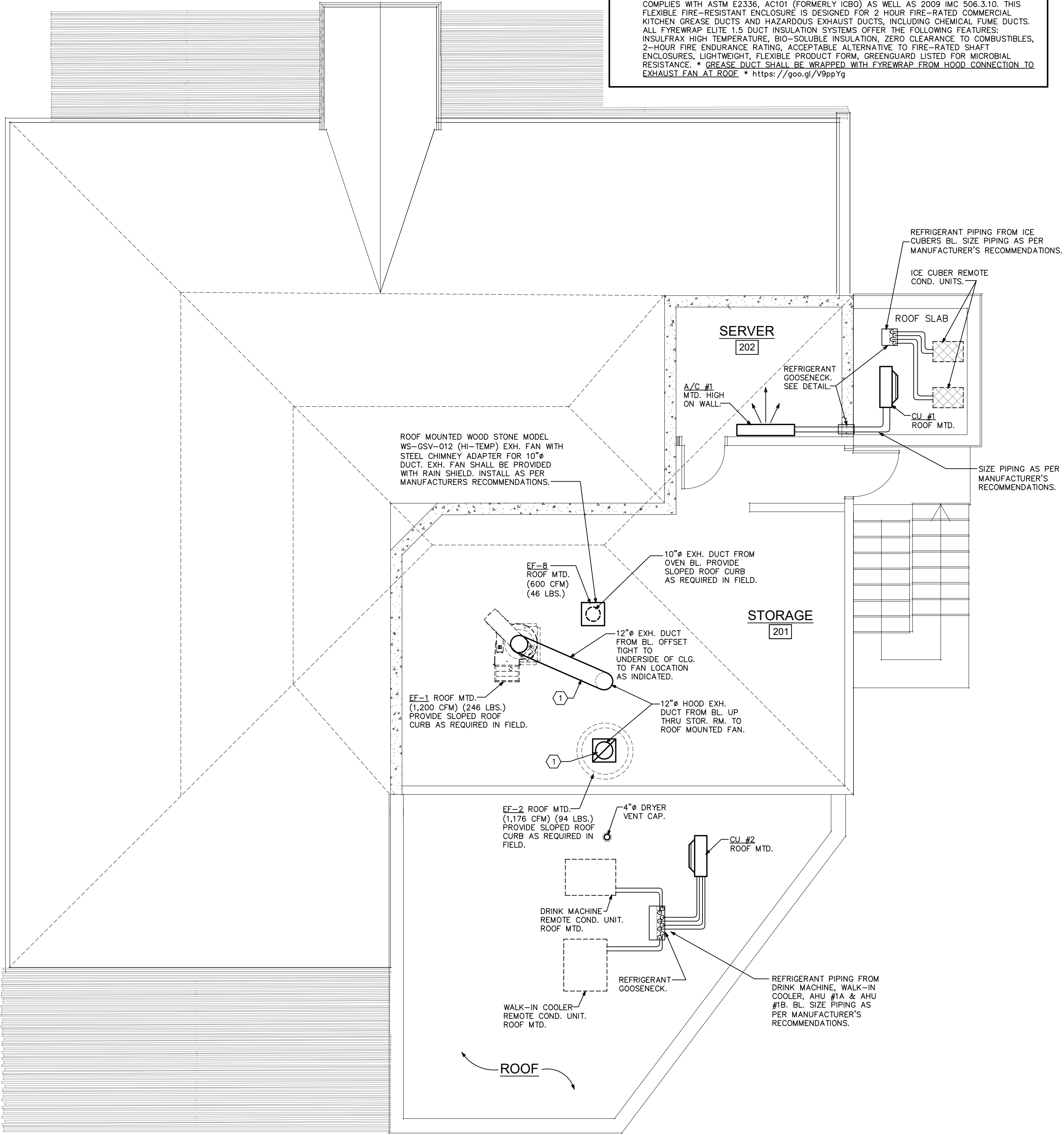
AHU #1/CU #1 PRODUCT DATA: <https://goo.gl/n7GAQT>

CU #1 PRODUCT DATA: <https://goo.gl/wzX9pV>

AHU #2A & 2B DATA: <https://goo.gl/efJZtc>

SPECIFIC MECHANICAL NOTES

① GREASE DUCT FIRE WRAP SHALL BE A 2-LAYER "FYREWAP" SYSTEM OR APPROVED EQUAL. SHALL BE A FYREWAP ELITE 1.5 TWO LAYER ASTM E2336 DUCT INSULATION SYSTEM WHICH COMPLIES WITH ASTM E2336, AC101 (FORMERLY ICBO) AS WELL AS 2009 IMC 506.3.10. THIS FLEXIBLE FIRE-RESISTANT ENCLOSURE IS DESIGNED FOR 2 HOUR FIRE-RATED COMMERCIAL KITCHEN GREASE DUCTS AND HAZARDOUS EXHAUST DUCTS, INCLUDING CHEMICAL FUME DUCTS. ALL FYREWAP ELITE 1.5 DUCT INSULATION SYSTEMS OFFER THE FOLLOWING FEATURES: INSULFRAX HIGH TEMPERATURE, BIO-SOLUBLE INSULATION, ZERO CLEARANCE TO COMBUSTIBLES, 2-HOUR FIRE ENDURANCE RATING, ACCEPTABLE ALTERNATIVE TO FIRE-RATED SHAFT ENCLOSURES, LIGHTWEIGHT, FLEXIBLE PRODUCT FORM, GREENGUARD LISTED FOR MICROBIAL RESISTANCE. * GREASE DUCT SHALL BE WRAPPED WITH FYREWAP FROM HOOD CONNECTION TO EXHAUST FAN AT ROOF. * <https://goo.gl/V9ppYg>



1 STOR. LOFT PLAN - MECHANICAL
SCALE: 1/4"=1'-0"

HOOD NO.	TAG	MODEL	LENGTH	MAX. COOKING TEMP.	TOTAL EXH. CFM	EXHAUST PLENUM								HOOD CONFIG.		
						RISE(S)								HOOD CONSTRUCTION	END TO END	ROW
						WIDTH	LENG.	HEIGHT	DIA.	CFM	VEL.	S.P.				
1		5412 SND-2	4' 0"	600 Deg.	1200			4"	10"	1200	2200	-0.978"	430 SS 100%	LEFT	ALONE	
2		5412 SND-2	4' 0"	600 Deg.	1176			4"	10"	1176	2156	-0.939"	430 SS Where Exposed	RIGHT	ALONE	

[illegible]

H.O. NO.	TAG	OPTION						
1		FIELD WRAPPER	9.00" High	Front, Left				
	BACK SPLASH	80.00" High	X 97.00" Long	430 SS Vertical				
	LEFT VERTICAL END PANEL	27" Top Width,	21" Bottom Width,	68" High	Insulated 430 SS			
	SENSOR-CV							
2		FIELD WRAPPER	9.00" High	Front, Right				
	RIGHT SIDESPLASH	92.00" High	X 54.00" Long	430 SS Vertical				
	RIGHT END STANDOFF(FIN/SLP)	1" Wide	54" Long	Insulated				
	RIGHT VERTICAL END PANEL	27" Top Width,	21" Bottom Width,	68" High	Insulated 430 SS			
SENSOR-CV								

Diagram illustrating the dimensions and components of a Vented Curb:

- Overall width: 23"
- Overall height: 24"
- Overall depth: 23"
- Component labels:
 - VENTED CURB
 - 20 GAUGE STEEL CONSTRUCTION
 - 3" FLANGE
- Roof opening dimensions (dashed lines):
 - Width: 22 1/2"
 - Depth: 22 1/2"

SPECIFY PITCH:
EXAMPLE: 7/12 PITCH = 30° SLOPE

FAN UNIT NO.	TAG	FAN UNIT MODEL #	CFM	RPM	H.P.	B.H.P.	Ø	VOLT	FLA	DISCHARGE VELOCITY	WEIGHT (LBS.)	SONES	
1		CASRE15DD	1200	1,100	1.330	1.500	0.5620	3	208	4.4	882 FPM	246	16.2
2		DUBSHFA	1176	1,200	1230	0.750	0.3690	3	208	2.6	372 FPM	94	13.1

FAN UNIT NO.	TAG	OPTION (Qty. - Descr.)
1		1 - Utility Set Grease Cup 1 - RE15DD - High Temperature Heat & Smoke Option.
2		1 - Grease Box

FAN UNIT NO.	TAG	EXHAUST			SUPPLY			
		GREASE CUP	GRAVITY DAMPER	WALL MOUNT	SIDE DISCHARGE	GRAVITY DAMPER	MOTORIZED DAMPER	WALL MOUNT
1		YES						
2		YES						

NO.	ON FAN	WEIGHT	ITEM	SIZE
1	# 1	37 LBS	Curb	23.000"W x 23.000"L x 24.000"H Vented
2	# 2	41 LBS	Curb	23.000"W x 23.000"L x 24.000"H Vented Hinged

**HOOD CORNER
HANGING ANGLE
(HARDWARE BY INSTALLER)**

1/2" - 13 THP
GRADE 5 (UNFINISH)
STEEL HEX NUTS

1/2" - 13 THP
GRADE 5 (UNFINISH)
STEEL ALL-THREAD

1/2" - 13 THP
GRADE 5 (UNFINISH)
STEEL FLAT WASHER

1/2" - 13 THP
GRADE 5 (UNFINISH)
STEEL ALL-THREAD

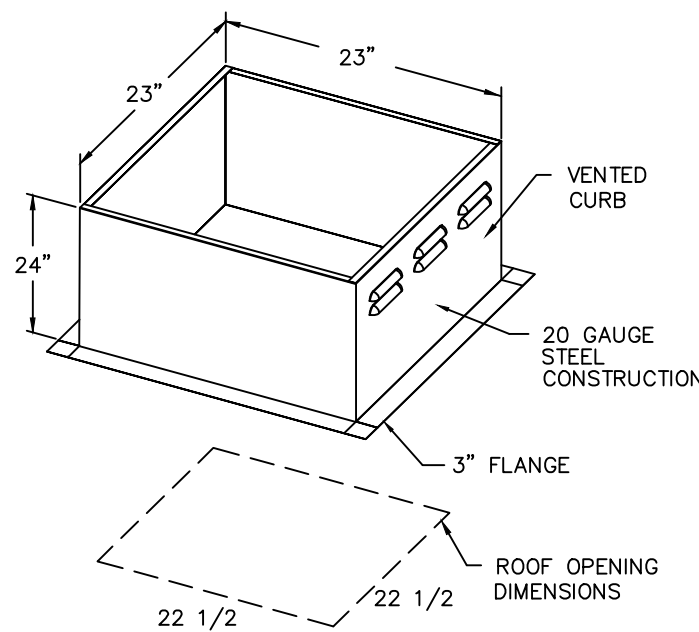
1/2" - 13 THP
GRADE 5 (UNFINISH)
STEEL FLAT WASHER

**HOOD CORNER
HANGING ANGLE
(HARDWARE BY INSTALLER)**

1/2" - 13 THP
GRADE 5 (UNFINISH)
STEEL FLAT WASHER

1/2" - 13 THP
GRADE 5 (UNFINISH)
STEEL ALL-THREAD

HANGING ANGLE MUST BE SUPPORTED WITH 1/2" - 13 TPI GRADE 5 (MINIMUM) ALL-THREAD. SANDWICH HANGING ANGLES AND CEILING ANCHOR POINTS WITH 1/2" GRADE 5 (MINIMUM) STEEL FLAT WASHERS AND 1/2" - 13 TPI GRADE 5 (MINIMUM) HEX NUTS AS SHOWN. MUST USE DOUBLED HEX NUT CONFIGURATION BENEATH HOOD HANGING ANGLES AND ABOVE CEILING ANCHORS. MAINTAIN 1/4" OF EXPOSED THREADS BENEATH BOTTOM HEX NUT. TORQUE ALL HEX NUTS TO 57 FT-LBS.



SPECIFY PITCH:
EXAMPLE: 7/12 PITCH = 30° SLOPE

NOTE:
AS PER NFPA 17A, PULL STATION SHALL BE NO LESS THAN 10' FROM HOOD AND NOT FARTHER THAN 20' FROM HOOD AND MUST BE LOCATED IN PATH OF EGRESS.

ANSUL PULL STATION DETAIL

1/2" CONDUIT STRAIGHT UP
TO HOOD CEILING LINE
NO OFFSET OR BEND

6" STANDARD ELECTRICAL
KNOCKOUT BOX

1/2" WIDE FINISHED FLOOR
OR IN ACCORDANCE WITH LOCAL
CODE

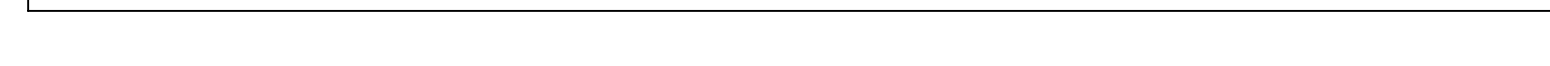
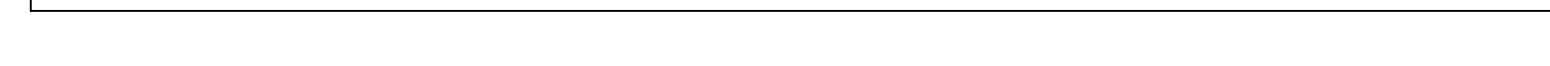
1/2"

PULL

PULL STATION

NOTE:
HEIGHT OF PULL STATION SHOULD BE DETERMINED
IN ACCORDANCE WITH AUTHORITY HAVING JURISDICTION.

NO.	TAG	PACKAGE #	LOCATION	SWITCHES		OPTION	FANS CONTROLLED				
				LOCATION	QUANTITY		TYPE	φ	H.P.	VOLT	FLA
1		SC-3202220FP	Wall Mount In SS Box	05 - SS Wall Mount Box	2 Light 2 Fan	Smart Controls Thermostatic Control	Exhaust	3	1.500	208	4.4
							Exhaust	3	0.750	208	2.6



Rockford Sanitary Systems, Inc.
ROCKFORD, IL 61125-0983
(815) 229-5077 - (800) 747-5077 - FAX (815) 229-5108
WEB SITE-www.rsfdsystems.com E-MAIL-rssem@rfsdsystems.com

MODEL NO. GF-3475-M
GREASE SEPARATOR

INLET

OUTLET

VENT

OPTIONAL FEATURES

☐ ANCHOR FLANGE

☐ CLAMP RING

☐ RECESSED LIFT HANDLES IN COVERS

☐ EPOXY COATING

☐ ANCHORS

☐ REINFORCED COVER

☐ ALUMINUM COVER

☒ STAINLESS STEEL CONSTRUCTION

☒ SEDIMENT BASKET

☐ FILTER MEDIA

☐ INTEGRAL EXTENSION _____ INCHES

Specifications

ROCKFORD MODEL GF-3475-M ALL WELDED 10 GA. STEEL SEPARATOR, 80 GALLON STATIC CAPACITY, 75 G.P.M. INTERMITTENT FLOW, 4.00" TAPPED INLET/OUTLET WITH 2.00" TAPPED INTERNAL VENT CONNECTION, 403 LBS GREASY SLUDGE CAPACITY, VISIBLE DOUBLE-WALL OUTSIDE TRAP SEAL, SEPARATOR PLATE AND REMOVEABLE FILTER SCREEN, REMOVABLE 3/8" NONSKID DIAMOND TREAD-PLATE COVER FOR FLUSH WITH FLOOR INSTALLATION SUITABLE FOR PEDESTRIAN TRAFFIC SECURED WITH STAINLESS FLAT HEAD SCREWS, HEAVY DUTY LEAK-PROOF GASKET, OPEX SHOP COAT COATING INSIDE AND BITUMINOUS COATING OUTSIDE.

GREASE TRAP CALCULATIONS

3 COMP. SINK (SINK SIZE) 18"x18"x14"x3= 13,608 CU. IN. X 1(GAL)/231 CU. IN. = 58.9 GAL. X .75 (75 % ACTUAL WATER VOLUME) = 44.1 GAL. W/ FLOW RATE OF 2 GAL./MIN. (44.1 DIVIDED BY 2) = 22.0 G.P.M.

PREP SINK (SINK SIZE) 18"x21"x14"x3= 5,292 CU. IN. X 1(GAL)/231 CU. IN. = 22.9 GAL. X .75 (75 % ACTUAL WATER VOLUME) = 17.1 GAL. W/ FLOW RATE OF 2 GAL./MIN. (17.1 DIVIDED BY 2) = 8.5 G.P.M.

(3) 3" FLOOR SINK = 12 GPM

(4) 3" FLOOR SINK = 16 GPM

TOTAL REQUIREMENT = 58.6 G.P.M.

2 GREASE SEPARATOR DETAIL

NO SCALE

PLUMBING ABBREVIATION LEGEND			
DN.	DOWN	C.C.	CENTER TO CENTER
EXT.	EXTERIOR	N.T.S.	NOT TO SCALE
F.D.	FLOOR DRAIN	MFG.	MANUFACTURER
F.F.	FINISH FLOOR	S.O.V.	SHUT OFF VALVE
A.F.F.	ABOVE FINISH FLOOR	W.C.	WATER CLOSET
V.T.R.	VENT THRU ROOF	LAV.	LAVATORY
TYP.	TYPICAL	SK.	SINK
R.D.	ROOF DRAIN	D.W.	DISH WASHER
REV.	REVISION	E.D.F.	ELECTRIC DRINKING FOUNTAIN
O.C.	ON CENTER	UR.	URINAL
F.U.	FIXTURE UNITS	H.B.	HOSE BIBBS
C.O.	CLEANOUT	E.W.H.	ELECTRIC WATER HEATER
JAN.SK.	JANITOR SINK	P & T	PRESSURE & TEMPERATURE
RWL.	RAIN WATER LEADER		

CONNECT TO EXIST. SANITARY PIPING BELOW GRADE ON SITE IN THIS AREA. CONTRACTOR SHALL VERIFY EXACT LOCATION PRIOR TO CONSTRUCTION.

2-WAY C.O. W/TEST TEE.

4"

BL. FL.

1 FLOOR PLAN - PLUMBING

(SANITARY AND GREASE WASTE PIPING)

SCALE: 1/4"=1'-0"

PLUMBING SYMBOLS LEGEND	
	FLOOR DRAIN
	HOSE BIBB
	CLEANOUT
	RELIEF VALVE
	AIR CHAMBER
	UNION
	SOIL OR WASTE LINE
	SANITARY VENT LINE
	DOMESTIC COLD WATER
	DOMESTIC HOT WATER
	DOMESTIC WATER RECIRCULATION
	PRESSURE & TEMP. RELIEF LINE
	CONDENSATE DRAIN LINE
	RAIN WATER LEADER
	GAS LINE
	SEWER LINE
	FIRE PROTECTION
	SHUT OFF VALVE
	FIRE SPRINKLER HEAD
	PIPE TURN UP
	PIPE TURN DOWN
	P-TRAP

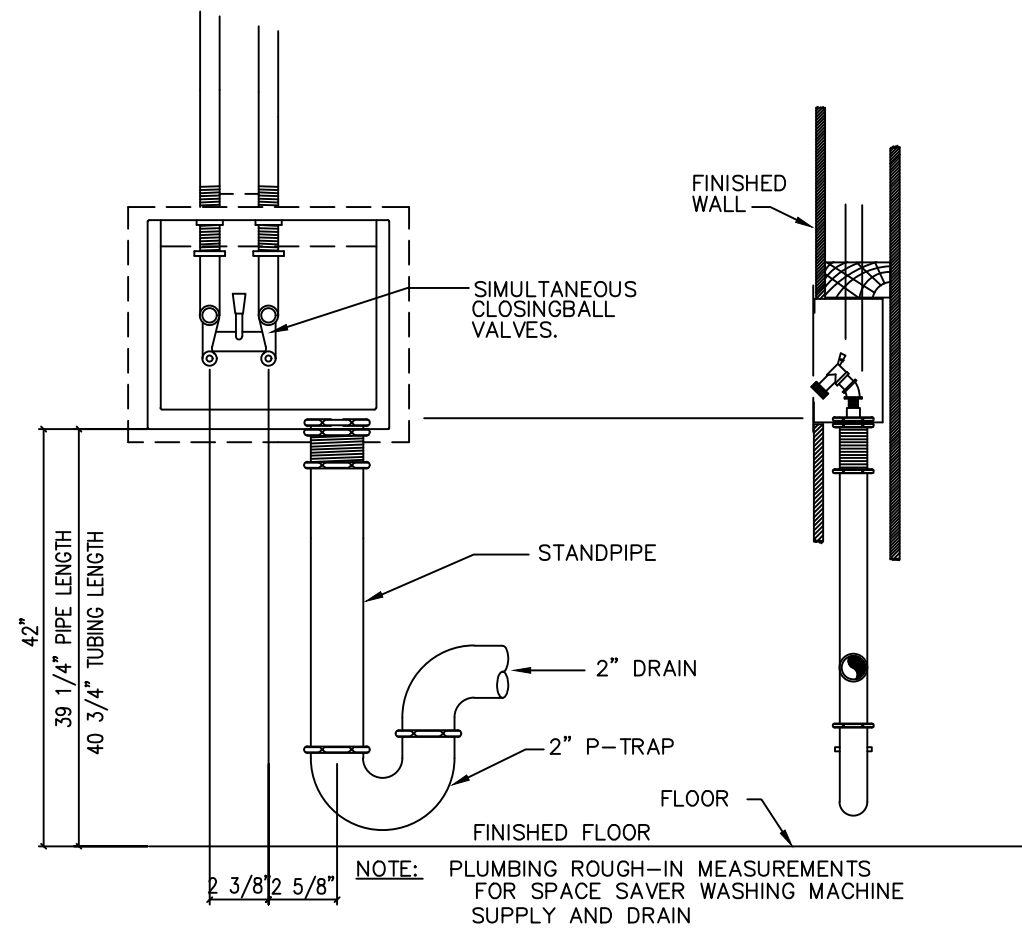
REV.	DATE	DESCRIPTION

P1

SPECIFIC PLUMBING NOTES

1

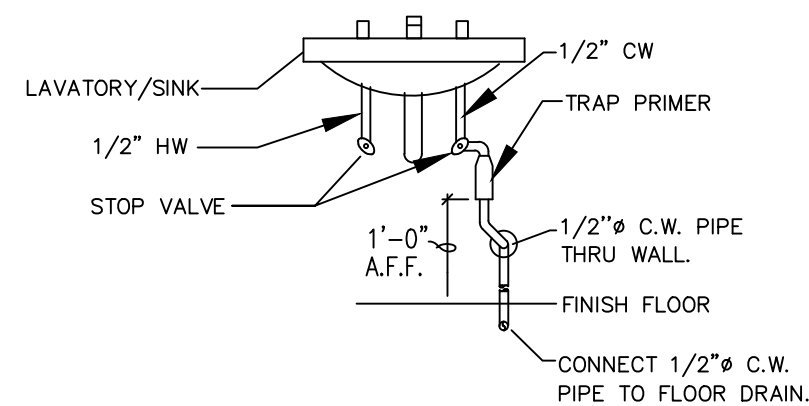
WATER CONNECTION TO THIS APPLIANCE SHALL BE PROVIDED WITH A BACKFLOW PREVENTER. BACKFLOW PREVENTER SHALL BE A "WATTS" SD3 3/8". *ASSE 1022 Approved Dual Check with Atmospheric Vent. <https://goo.gl/6ozl8L>.



2

WASHER CONN. BOX DTL.

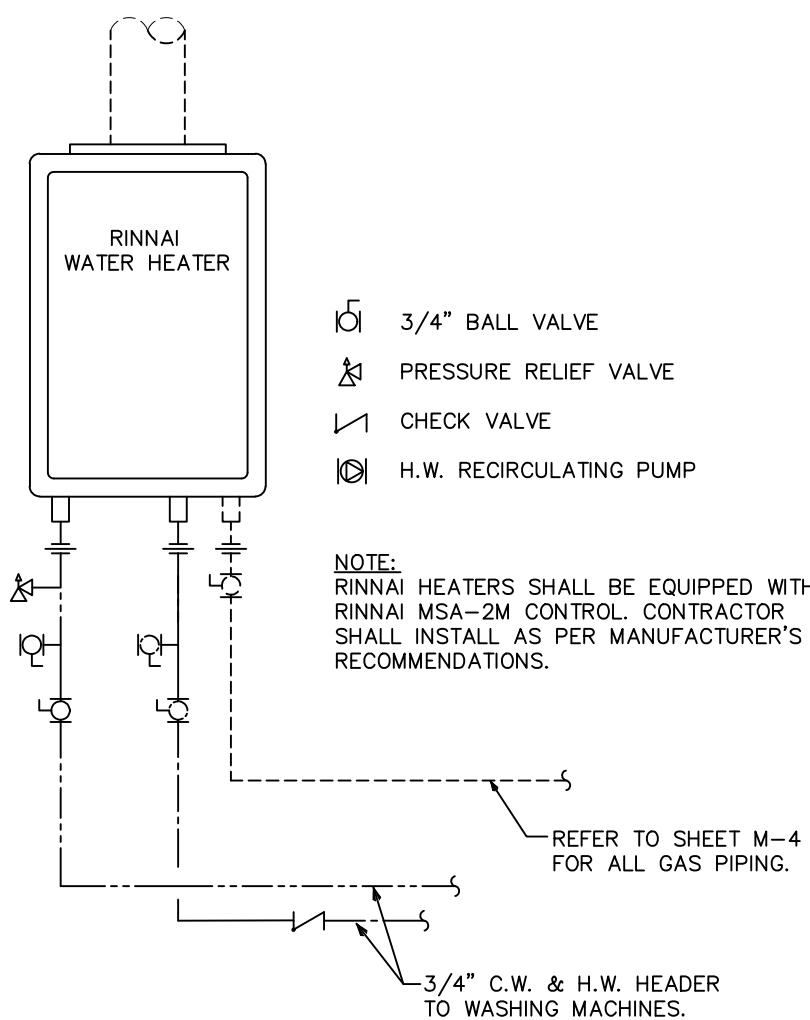
NO SCALE



3

TRAP PRIMER DETAIL

NO SCALE



4

RINNAI WATER HTR. DETAIL

NO SCALE

CONNECT TO EXIST. C.W. PIPING BELOW GRADE ON SITE IN THIS AREA. CONTRACTOR SHALL VERIFY EXACT LOCATION PRIOR TO CONSTRUCTION.

1-1/4" C.W. BL. GRADE. (55 F.U.)

1-1/4" C.W. UP IN WALL. OFFSET TIGHT TO UNDERSIDE OF CLG. AS INDICATED.

ALL WATER PIPING EXPOSED TIGHT TO UNDERSIDE OF CLG. PAINT TO MATCH CLG. UNLESS OTHERWISE NOTED.

ALL WATER PIPING EXPOSED TIGHT TO UNDERSIDE OF CLG. PAINT TO MATCH CLG. UNLESS OTHERWISE NOTED.

1

FLOOR PLAN - PLUMBING

(WATER PIPING)
SCALE: 1/4"=1'-0"

REV.	DATE	DESCRIPTION
------	------	-------------

PLUMBING FIXTURE SCHEDULE

P-1 (HANDICAPPED FLOOR MOUNTED FLUSH TANK WATER CLOSET)
SHALL BE AN AMERICAN STANDARD MODEL 2700AA.001 CADET 3 RIGHT HEIGHT ELONGATED 1.6 GPF TOILET, VITREOUS CHINA, WALL MOUNT WITH CONCEALED ARMS SUPPORT. FAUCET SHALL BE A "CHICAGO" MODEL 333-66584P06 METRIC FAUCET. UNIT IS ADA COMPLIANT, ADJUSTABLE RUN TIME FROM 2 TO 15 SECONDS, OPENS WITH PUSH, 0.20 MAX GALLON/CYCLE, WATER PIPING AND P-TRAP SHALL BE COVERED WITH AN UNDER-SINK PROTECTIVE PIPE COVER KIT BY TRUEBRO (TRUEBRO.COM) OR APPROVED EQUAL. PROVIDE MIXING VALVE BELOW LAVATORY SET TO 110° H.W. LAVATORY: <https://goo.gl/Lxw4SI> TOILET SEAT: <https://goo.gl/120ayk>
* TOILET LEVER HANDLE SHALL BE LOCATED ON ACCESSIBLE SIDE OF TOILET.

P-2 (HANDICAPPED WALL HUNG LAVATORY)
SHALL BE AN AMERICAN STANDARD REGALYN LAVATORY MODEL 4869.004 (CENTER HOLE ONLY), VITREOUS CHINA, WALL MOUNT WITH CONCEALED ARMS SUPPORT. FAUCET SHALL BE A "CHICAGO" MODEL 333-66584P06 METRIC FAUCET. UNIT IS ADA COMPLIANT, ADJUSTABLE RUN TIME FROM 2 TO 15 SECONDS, OPENS WITH PUSH, 0.20 MAX GALLON/CYCLE, WATER PIPING AND P-TRAP SHALL BE COVERED WITH AN UNDER-SINK PROTECTIVE PIPE COVER KIT BY TRUEBRO (TRUEBRO.COM) OR APPROVED EQUAL. PROVIDE MIXING VALVE BELOW LAVATORY SET TO 110° H.W. LAVATORY: <https://goo.gl/Lxw4SI> FAUCET: <https://goo.gl/69DjDw>

P-3 (FLOOR MOUNTED CANWASH/MOP RECEPTOR)
SHALL BE A FLORESTONE #50 24X24X6" MOLED MOP BASIN WITH 3" OUTLET. PROVIDE WITH MOP DRAIN COORDINATOR SHALL VERIFY FINAL HEIGHT OF FUNNEL WITH EQUIPMENT THAT IS UTILIZING FLOOR DRAIN AND VERIFY PROPER CLEARANCE PRIOR TO CONSTRUCTION. COORDINATE WITH EQUIPMENT MANUFACTURER.
MR-370 HOSE & HOSE BRACKET, MR-372 MOP HANGER, MR-373 BUMPER GUARDS AND MR-377 STAINLESS TEEL WALL GUARD.
SINK: <https://goo.gl/Nnh75Y> FAUCET/ACCESSORIES: <https://goo.gl/wcWM7>

P-4 (FLOOR DRAIN WITH TRAP PRIMER)
SHALL BE A JOSAM 30003-A-50 SERIES COATED CAST IRON FLOOR DRAIN WITH 1/2" TRAP PRIMER. 3"ø PIPE CONNECTION, 6"ø DRAIN TOP, STRAINER TYPE 6A. TWO-PIECE BODY WITH DOUBLE DRAINAGE FLANGE, WELOLOC INVERTIBLE NON-PUNCTURING FLASHING COLLAR, WEEPHOLES, BOTTOM OUTLET AND ADJUSTABLE SATIN NIKALOY ROUND SUPER-FLO STRAINER.
DRAIN: <https://goo.gl/GG5ily>

P-5 (FLOOR SINK W/SEDIMENT BUCKET)
SHALL BE A JOSAM #3403-3-31 SERIES SQUARE CAST IRON 8" DEEP SUPER-FLO-SEPTOR FLOOR SINK WITH PORC-COATED INTERIOR, DOUBLE DRAINAGE FLANGE WITH WEEPHOLES, BOTTOM OUTLET, ALUMINUM INTERNAL DOME STRAINER, AND CAST IRON, NON-TRAFFIC, PORC-COATED, ANTI-TILTING GRATE, WITH HALF GRATE AND ALUMINUM SEDIMENT BUCKET.
DRAIN: <https://goo.gl/TCUUVG>

P-6 (AUTOMATIC TRAP PRIMER)
SHALL BE A IPS CORPORATION "SIQOX CHIEF" MODEL 695 TRAP PRIMER WITH VACUUM BREAKER. AUTOMATIC TRAP PRIMER VALVE SHALL ACTIVATE WITH A 10 PSIG PRESSURE DROP BETWEEN 30-150 PSIG.
DRAIN: <https://goo.gl/WqkVxK>

P-7 (2" STUDOR VENT - AIR ADMITTANCE VALVE)
SHALL BE A IPS CORPORATION "STUDOR MINI-VENT". 2" VENT.
STUDOR VENT: <https://goo.gl/txH9PT>

P-8 (S.S. HAND SINK W/FAUCET)
COORDINATE FINAL SPECIFICATIONS WITH ARCHITECT/OWNER PRIOR TO CONSTRUCTION.
STUDOR VENT: <https://goo.gl/txH9PT>

P-9 (S.S. PREP SINK W/FAUCET)
COORDINATE FINAL SPECIFICATIONS WITH ARCHITECT/OWNER PRIOR TO CONSTRUCTION.
STUDOR VENT: <https://goo.gl/txH9PT>

P-10 (S.S. PRE-RINSE SINK W/FAUCET)
COORDINATE FINAL SPECIFICATIONS WITH ARCHITECT/OWNER PRIOR TO CONSTRUCTION.
STUDOR VENT: <https://goo.gl/txH9PT>

P-11 (S.S. 3 COMPARTMENT SINK W/FAUCET)
COORDINATE FINAL SPECIFICATIONS WITH ARCHITECT/OWNER PRIOR TO CONSTRUCTION.
STUDOR VENT: <https://goo.gl/txH9PT>

P-12 (1/2" MIXING VALVE)
1/2" MIXING VALVE SHALL BE A "WATTS" MODEL LF1170-PEX-M2 SET AT 110° Lead Free* cast copper sillcock alloy body construction
* <http://media.wattswater.com/ES-LF1170-LF1170.pdf>
MIXING VALVE: <https://goo.gl/Gt08b7>

P-13A (HOSE BIBB INTERIOR W/HANDWHEEL)
SHALL BE A "WOODFORD" MODEL 101 ANTI-SIPHON WALL FAUCET.
HOSE BIBB: <https://goo.gl/PD0LyD>

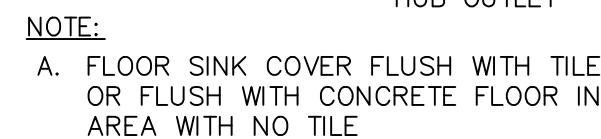
P-13B (HOSE BIBB W/LOCKED BOX)
SHALL BE A ZURN Z1350 ENCASED MODERATE CLIMATE WALL HYDRANT FOR NARROW WALL INSTALLATION. COMPLETE WITH BRONZE BODY, ALL BRONZE INTERIOR PARTS, REPLACEABLE SEAT WASHER, SCREWDRIVER OPERATED STOP VALVE IN SUPPLY, KEY OPERATED CONTROL VALVE, AND 3/4 IN FEMALE INLET AND 3/4 MALE HOSE CONNECTION STANDARD. STAINLESS STEEL BOX AND COVER COVERED WITH CYLINDER LOCK AND "WATER" STAMPED ON COVER.
**NOTE: CAULKING OF JMWHS JOINTS BY OTHERS.
HOSE BIBB: <https://goo.gl/WmhFgs>

P-14 (TANKLESS GAS WATER HEATER)
WATER HEATER SHALL BE A "RINNAI" MODEL C1991 (KBD3237FFUDC), 199,000 BTUH INPUT W/CONCENTRIC SIDEWALL VENTING KIT.
WATER HEATER: <https://goo.gl/Pde0MH>

P-15 (FLOOR TROUGH)
FLOOR TROUGH SHALL BE AN "ADVANCE TABCO" MODEL FTG-1248.
FLOOR TROUGH: <https://goo.gl/88yc5T>

P-16 (HUB DRAIN - INDIRECT WASTE FUNNEL)
SHALL BE A "ZURN" Z326, 2" PIPE CONNECTION, DURA-COATED CAST IRON BODY AND BOTTOM OUTLET COORDINATOR SHALL VERIFY FINAL HEIGHT OF FUNNEL WITH EQUIPMENT THAT IS UTILIZING FLOOR DRAIN AND VERIFY PROPER CLEARANCE PRIOR TO CONSTRUCTION. COORDINATE WITH EQUIPMENT MANUFACTURER.
DRAIN: <https://goo.gl/1A5eeA>

NOTES:
1.) ALL PLUMBING FIXTURES SHALL BE AS SPECIFIED OR APPROVED EQUAL.
2.) PROVIDE ANGLE STOPS ON ALL WATER SERVICE LINES TO FIXTURES FOR INDIVIDUAL SHUT-OFF.
3.) COORDINATE ALL SPECIFICATIONS WITH ARCH./OWNER PRIOR TO PURCHASING.

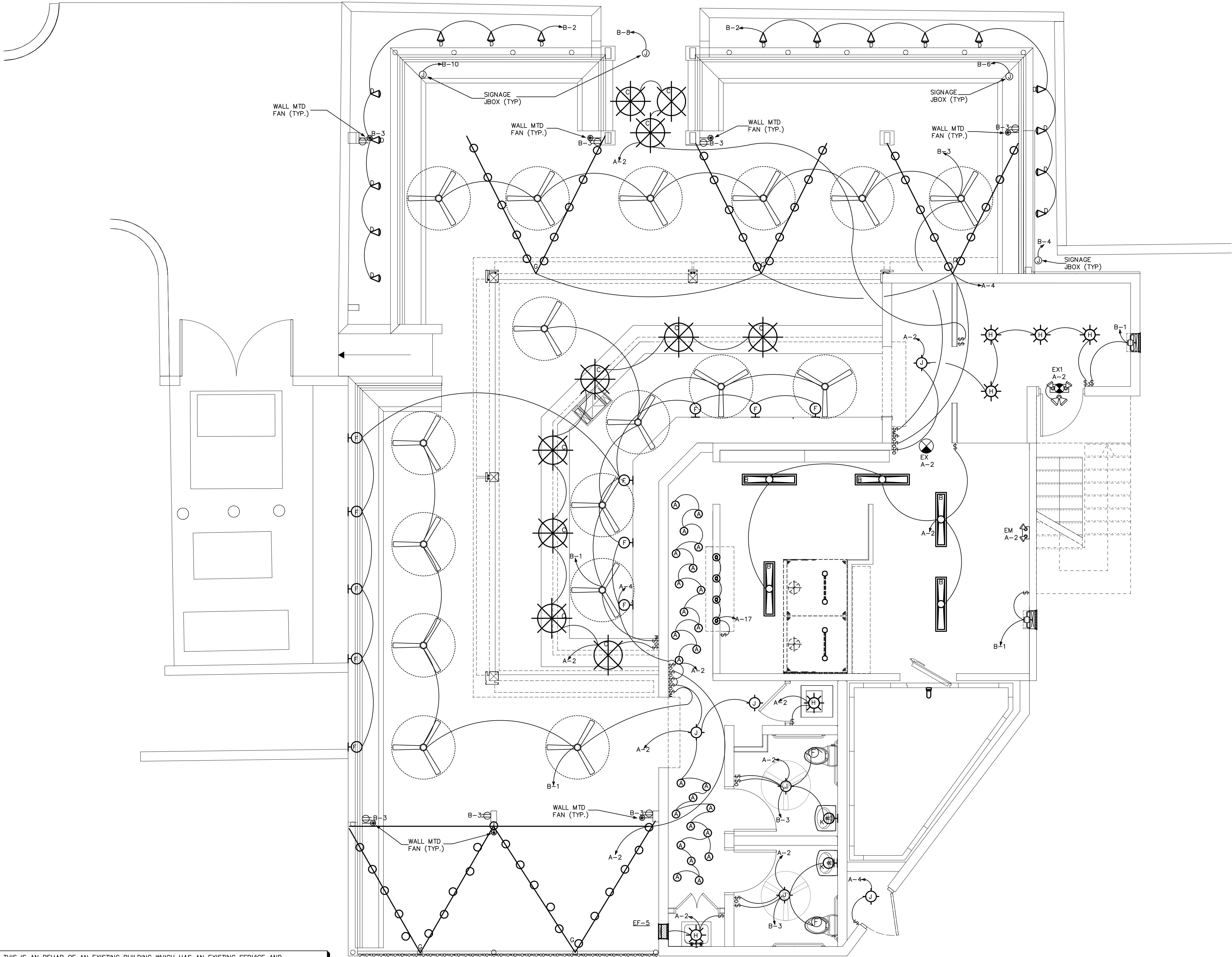


2 FLOOR SINK CONN. DETAIL

- 1) DRAWINGS ARE DIAGRAMMATIC AND SHALL NOT BE SCALED. REFER TO ARCHITECTURAL PLANS AND ELEVATIONS FOR EXACT LOCATION OF ALL PLUMBING FIXTURES, EQUIPMENT, ETC. PLUMBING CONTRACTOR SHALL FURNISH AND INSTALL ALL ITEMS REQUIRED FOR A COMPLETE AND ACCEPTABLE WORKMANLIKE INSTALLATION. CONTRACTOR IS RESPONSIBLE TO INSTALL ALL FIXTURES AND EQUIPMENT IN STRICT COMPLIANCE WITH THE MANUFACTURERS INSTALLATION INSTRUCTIONS. THIS REQUIREMENT IS TO SUPERSEDE ANY DETAILS OR INFORMATION CONTAINED ON THESE DRAWINGS.
- 2) ALL WORK AND MATERIALS SHALL COMPLY WITH THE LATEST EDITION OF THE NATIONAL, STATE, AND ALL LOCAL CODES AND ORDINANCES HAVING JURISDICTION.
- 3) THE PLUMBING CONTRACTOR SHALL VISIT THE SITE AND THOROUGHLY FAMILIARIZE HIMSELF WITH ALL EXISTING CONDITIONS. ALL EXECUTION AND BACKFILL AS REQUIRED FOR THIS PHASE OF CONSTRUCTION SHALL BE A PART OF THIS CONTRACT.
- 4) ALL MATERIAL SHALL BE NEW.
- 5) ALL WORK SHALL BE PERFORMED BY A LICENSED PLUMBING CONTRACTOR IN A FIRST CLASS WORKMANLIKE MANNER. THE COMPLETED SYSTEM SHALL BE FULLY OPERATIVE AND ACCEPTED BY ENGINEER/ARCHITECT.
- 6) ALL REQUIRED INSURANCE SHALL BE PROVIDED FOR PROTECTION AGAINST PUBLIC LIABILITY OR PROPERTY DAMAGE FOR THE DURATION OF THE WORK.
- 7) THE PLUMBING CONTRACTOR SHALL SECURE AND PAY ALL PERMIT FEES, INSPECTIONS, AND TESTS.
- 8) ALL WORK SHALL BE COORDINATED WITH OTHER TRADES TO AVOID INTERFERENCE WITH THE PROGRESS OF CONSTRUCTION.
- 9) THE PLUMBING CONTRACTOR SHALL GUARANTEE ALL MATERIALS AND WORKSMANSHIP FREE FROM DEFECTS FOR A PERIOD OF NOT LESS THAN (1) ONE YEAR FROM DATE OF ACCEPTANCE. CORRECTION OF ANY DEFECTS SHALL BE COMPLETED WITHOUT ADDITIONAL CHARGE AND SHALL INCLUDE REPLACEMENT OR REPAIR OF ANY OTHER PHASE OF THE INSTALLATION WHICH MAY HAVE BEEN DAMAGED THEREBY.
- 10) VERIFY LOCATION, SIZE AND INVERTS OF ALL EXISTING UTILITIES PRIOR TO START OF CONSTRUCTION. ADVISE ARCHITECT/ENGINEER OF ANY DISCREPANCIES.
- 11) ALL FIXTURES SHALL BE PROVIDED WITH READILY ACCESSIBLE STOPS.
- 12) ALL BELOW FLOOR SLAB WATER PIPING SHALL BE FLEXIBLE "TEMPRITE PEX (CROSS-LINKED POLYETHYLENE)" INSTALLED AS PER MANUFACTURERS RECOMMENDATIONS FOUND HERE: WWW.LUBRIZOL.COM. ALL ABOVE SLAB WATER PIPING SHALL BE "FLOWGUARD GOLD CPVC" INSTALLED AS PER MANUFACTURERS RECOMMENDATIONS FOUND HERE: WWW.FLOWGUARDGOLD.COM. ALL WATER PIPING AS SPECIFIED OR APPROVED EQUAL. ALL 2" WATER PIPING SHALL BE TYPE "L" COPPER AND TYPE "K" COPPER FOR 2 1/2" AND LARGER. (OR APPROVED EQUAL).
- 13) SOIL, WASTES AND VENT PIPING SHALL BE PVC #40 D.M.V. WASTE AND VENT PIPING ABOVE SLAB SHALL BE PVC, IF APPROVED BY LOCAL AUTHORITIES HAVING JURISDICTION, OTHERWISE CAST IRON. PVC SHALL NOT BE INSTALLED IN A/C RETURN AIR PLENUM OR PENETRATE FIRE RATED WALLS OR FLOORS.
- 14) AIR CONDITIONING CONDENSATE DRAIN PIPING SHALL BE PVC #40 OR COPPER DRAIN WASTE AND BENT PIPE AND FITTINGS. INSULATE ALL CONDENSATE PIPING EXCEPT EXTERIOR PIPING. INSTALL ALL CONDENSATE PIPING FOR AIR CONDITIONING UNITS AS REQUIRED PER LOCAL CODES.
- 15) FURNISH AND INSTALL APPROVED WATER HAMMER ARRESTORS AT EACH GROUP OF FIXTURES. INSTALLATION OF WATER HAMMER ARRESTORS SHALL CONFORM TO THE MANUFACTURER'S RECOMMENDATIONS. PROVIDE AND INSTALL AN APPROVED WATER HAMMER ARRESTOR AT EACH FIXTURE OR DEVICE THAT HAS A SOLENOID WATER CONTROL VALVE.
- 16) PROVIDE CHROME PLATED COMBINATION COVERED PLATE AND CLEANOUT PLUG FOR ALL WALL CLEANOUTS, JOSAM 58990.
- 17) INSULATE LINES AS FOLLOWS:
 - A.) 1-1/2" THICK ARMAFLEX PREFORMED INSULATION SHALL BE PROVIDED ON BOTH C.W. & H.W. WHEN PIPING IS LOCATED OUTSIDE OF THE INSULATED BUILDING ENVELOPE.
 - B.) 1-1/2" THICK ARMAFLEX PREFORMED INSULATION SHALL BE PROVIDED ON HW PIPING & H.W. REIRC. PIPING, ONLY WHEN THERE IS A H.W. RECIRCULATING PIPING SYSTEM.
 - C.) CONDENSATE PIPING: 1/2" THICK ARMAFLEX PREFORMED OR APPROVED EQUAL.



LIGHTING FIXTURE SCHEDULE							
LABEL	TYPE OF FIXTURE	FINISH	LENS TYPE	VOLTAGE	LAMP	MANUFACTURER & MODEL NO.	REMARKS
A	CUSTOM HALLWAY LIGHT	WHITE		120	25 W LED	SATCO 90445	
B	SURFACE MTD 1'x4'	SILVER		120	42 W LED	GE EP 14-O-A2-C-V-SLVR	
C	BAR PENDANTS	WHITE	BULB	120	11 W LED	PABLO STUDIO PAB502094-SWEL MED WHT/BRA	SELECTED BY OWNER
D	LANDSCAPE PLANTER	BLACK		120	50 W LED	FILAMENT DESIGN CLI-DBM6708	
EM	EMERGENCY EGRESS	WHITE	RED	120	INCLUDED	LITHONIA ELM2	W/ BATTERY BACKUP SELECTED BY OWNER
EX1	EXIT/EMERGENCY EGRESS	WHITE	RED	120	INCLUDED	LITHONIA LHQM-LED-R-HO	W/ BATTERY BACKUP SELECTED BY OWNER
EX	EXIT SIGN	WHITE	RED	120	INCLUDED	LITHONIA LE-SW2R-120/277-ELN	W/ BATTERY BACKUP SELECTED BY OWNER
F	WALL SCONCE	BRONZE	OPEN	120	75 W MAX	CEDAR & MOSS TILT CONE	SELECTED BY OWNER
G	STRING LIGHT	WHITE		120	18 W LED	TEC LIGHTING 700PJKS935A12S	SELECTED BY OWNER
H	CAGE CEILING LIGHT	BLACK	BULB	120	7 W LED	360 LIGHTING 35G82	SELECTED BY OWNER
J	6" LED DOWNLIGHT	WHITE	OPEN	120	13.4 W LED	LITHONIA WF6 LED-35K-MVOLT MW	SELECTED BY OWNER
K	BATHROOM SCONCE	WHITE	BULB	120	9 W LED	ONEFORTYTHREE DOUBLE SCONCE	SELECTED BY OWNER



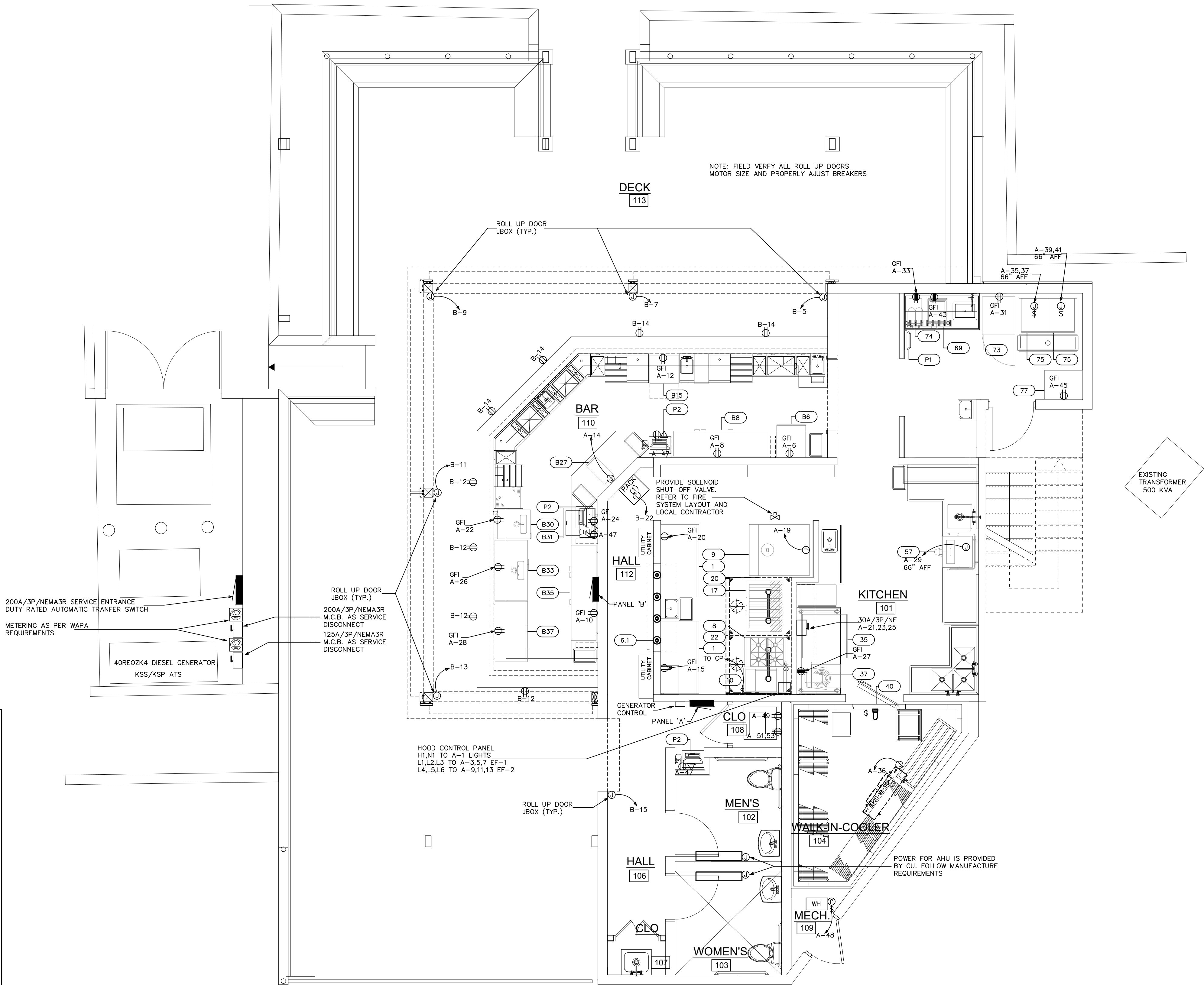
ELECTRICAL SYMBOLS LEGEND			
SYMBOLS	DESCRIPTION	SYMBOLS	DESCRIPTION
	DUPLEX RECEPTACLE, MTD. +18" AFF.		TRANSFORMER - SIZE AS NOTED
	240 VOLT RECEPTACLE (HT. AS REQ.)		PANEL - SIZE AS NOTED
	QUADRUPLEX RECEPTACLE, MTD. +18"		MOMENTARY CONTACT PUSH BUTTON
	COUNTERTOP HT. RECEPTACLE +42"		F-FAN; M-MOTOR; P-PUMP
	SINGLE POLE SWITCH, MTD +47"		SPECIAL OUTLET - AS REQUIRED
	THREE-WAY SWITCH, MTD +47"		EXIT SIGN; ONE SIDED, OR TWO SIDED
	MANUAL STARTER SWITCH		EMERGENCY LIGHTING
	DIMMER SWITCH, MTD +47"		RECESSED MOUNTED LIGHTING FIXTURE B DESIGNATES FIXTURE TYPE
	SWITCH W/ ILLUM WHEN ON MTD +47"		OVERHEAD OCCUPANCY SENSOR
	THREE-WAY SWITCH W/ OCCU SENSOR MTD. +47"		HIGHBAY HID LIGHTING FIXTURE B DESIGNATES FIXTURE TYPE
	SWITCH W/ OCCU SENSOR, MTD. +47"		FLUORESCENT LIGHTING FIXTURE B DESIGNATES FIXTURE TYPE
	JUNCTION BOX, FLUSH IF POSSIBLE		FLUORESCENT LIGHTING NIGHT LIGHT B DESIGNATES FIXTURE TYPE
	TELEPHONE / DATA OUTLET +18"		FLUORESCENT STRIP LIGHTING FIXTURE B DESIGNATES FIXTURE TYPE
	DED. COMPUTER TERM. OUTLET +18"		LED LIGHTING FIXTURE B DESIGNATES FIXTURE TYPE
	DISCONNECT SWITCH W/ STARTER		ISOLATED GROUND
	DISCONNECT SWITCH		WEATHER-PROOF
	FLR. MTD. FLUSH DUPLEX RECEPTACLE		BELOW COUNTER
	FLR. MTD. FLUSH QUAD. RECEPTACLE		TIME CLOCK - 24 HOUR
	FLR. MTD. FLUSH PHONE/DATA OUTLET		GROUND FAULT INTERRUPTER
	FLR. MTD. FLUSH COMPUTER OUTLET		ABOVE FINISHED FLOOR
	AREA SMOKE DETECTOR		ELECTRIC WATER COOLER
	HEAT DETECTOR		ABOVE SHOW WINDOW
	DUCT SMOKE DETECTOR		BELOW SHOW WINDOW
	FIRE ALARM MAN. PULL STATION +47"		FIRE ALARM CONTROL PANEL
	HORN W/ STROBE LIGHT, MTD. +60" # BESIDE DEVICE IS CANDELLA RATING		FIRE ALARM ANNUNCIATOR PANEL
	STROBE LIGHT ONLY, MTD. +80" # BESIDE DEVICE IS CANDELLA RATING		

NOTE THIS IS AN REHAB OF AN EXISTING BUILDING WHICH HAS AN EXISTING SERVICE AND DISTRIBUTION EQUIPMENT. ALTERATIONS TO EXISTING BUILDING BEING OF SUCH NATURE THAT ALL FACETS OF THE WORK ARE IMPOSSIBLE TO DETAIL AND SPECIFY. IT IS THEREFORE SPECIFICALLY THE RESPONSIBILITY OF THE CONTRACTOR TO CAREFULLY EXAMINE THE EXISTING BUILDING AND FAMILIARIZE HIMSELF WITH THE CONDITIONS AND RELATE THESE CONDITIONS TO THE SCOPE OF THE PROPOSED NEW WORK. ALL BIDS ARE EXPECTED TO ENCOMPASS THE TOTAL WORK SCOPE NEEDED TO PLACE THE COMPLETED ELECTRICAL SYSTEMS IN WORKING CONDITION TO THE EXTENT OF THE PLANS.

1 FLOOR PLAN - LIGHTING
SCALE: 1/4"=1'-0"

ELECTRICAL NOTES:

- GENERAL: ALL WORK SHALL CONFORM TO THE LATEST APPROVED EDITION OF THE NATIONAL ELECTRICAL CODE (NEC) AND ALL LOCAL JURISDICTIONAL CODES.
THE CONSTRUCTION SHALL BE IN ACCORDANCE WITH THE DRAWINGS AND ANY APPLICABLE SPECIFICATIONS. IF A PROBLEM IS ENCOUNTERED IN COMPLYING WITH THIS REQUIREMENT, THE CONTRACTOR SHALL NOTIFY THE OWNER OR HIS REPRESENTATIVE AS SOON AS POSSIBLE AFTER DISCOVERY OF THE PROBLEM, AND SHALL NOT PROCEED WITH THAT PORTION OF THE WORK UNTIL THE OWNER HAS DIRECTED THE CORRECTIVE ACTION TO BE TAKEN.
THE CONTRACTOR SHALL COORDINATE THE PROPOSED LOCATIONS OF ALL ELECTRICAL MATERIALS AND EQUIPMENT WITH THE REPRESENTATIVES OF THE OTHER TRADES INVOLVED BEFORE STARTING INSTALLATION OF THOSE ITEMS.
COORDINATE THE INSTALLATION OF REQUIRED SUPPORTING DEVICES, CONDUIT, AND SLEEVES TO BE SET IN CAST-IN-PLACE CONCRETE AND OTHER STRUCTURAL COMPONENTS, AS THEY ARE CONSTRUCTED.
UNLESS OTHERWISE SPECIFIED ON THE PLANS, ALL SPECS ARE NOT INTENDED TO BE PROPRIETARY. SUBSTITUTIONS WILL BE ACCEPTABLE FOR EQUAL RATED AND LISTED UNITS.
- SCOPE: EXCEPT WHERE OTHERWISE SPECIFICALLY INDICATED ON THE DRAWINGS BY "FUTURE", "BY OTHERS", OR BY A SIMILAR NOTATION, IT IS THE INTENT THAT THE CONTRACTOR FURNISH ALL LABOR, MATERIALS, EQUIPMENT AND TOOLS NECESSARY TO PROVIDE ALL SYSTEMS IN COMPLETE AND OPERATING CONDITION.
- EXCAVATE AS NECESSARY FOR THE INSTALLATION OF ELECTRICAL MATERIALS AND EQUIPMENT. VERIFY THE LOCATIONS OF EXISTING UNDERGROUND UTILITIES OR STRUCTURES BEFORE EXCAVATING AND EXERCISE CARE TO AVOID DAMAGE TO SUCH ITEMS DURING EXCAVATION. BACKFILL WITH EARTH FREE OF LARGE CLODS, LARGE STONES AND FOREIGN DEBRIS, DEPOSITED IN 6" LAYERS AND COMPACTED TO A DENSITY OF NOT LESS THAN THAT OF THE SURROUNDING UNDISTURBED MATERIAL.
- MATERIALS: THE MATERIALS AND EQUIPMENT FURNISHED SHALL BE AS INDICATED ON THE DRAWINGS. SUBSTITUTIONS SHALL NOT BE MADE EXCEPT WHERE EXPRESSLY APPROVED BY THE OWNER OR HIS REPRESENTATIVE PRIOR TO STARTING INSTALLATION OF THE ITEMS. THE ELECTRICAL MATERIALS AND EQUIPMENT FURNISHED SHALL BE LISTED OR LABELED BY UNDERWRITERS LABORATORIES OR OTHER RECOGNIZED TESTING ORGANIZATION, AND SHALL BE ACCEPTABLE TO THE LOCAL BUILDING AUTHORITY.
- GROUNDING: GROUNDING SHALL BE IN ACCORDANCE WITH ARTICLE 250, NEC.
- SHARED NEUTRAL CONDUCTORS SHALL NOT BE ALLOWED UNLESS INSTALLED IN ACCORDANCE WITH NEC-210.4.
- CONDUITS: PROVIDE CONDUITS WHERE CALLED FOR ON PANEL SCHEDULES. ELECTRICAL METALLIC TUBING (EMT) SHALL BE INSTALLED ONLY IN DRY LOCATIONS, IN CONCRETE ABOVE GRADE, AND WHERE NOT SUBJECT TO PHYSICAL DAMAGE. CONDUITS INSTALLED UNDERGROUND SHALL BE POLYVINYLCHLORIDE (PVC) AND SHALL NOT BE SMALLER THAN 3/4" TRADE SIZE. WHERE PVC CONDUIT IS INSTALLED UNDERGROUND, ELBOWS TURNING UP AND CONDUIT EMERGING ABOVE GRADE SHALL BE RSC. THE TOPS OF CONDUITS SHALL NOT BE LESS THAN 24" BELOW FINISHED GRADE. PVC CONDUIT INSTALLED ABOVE GRADE OR DIRECT-BURIED IN EARTH SHALL BE NEMA TC2 TYPE EPC-40-PVC (SCHEDULE 40) EXCEPT THAT WHERE UNDER AREAS SUBJECT TO HEAVY VEHICULAR TRAFFIC, IT SHALL BE NEMA TC2 TYPE EPC-80-PVC (SCHEDULE 80).
ALL ARMOR CLAD CABLE (AC CABLE) WIRING SHALL MEET OR EXCEED ALL NEC, OSHA AND HUD STANDARDS.
- CONDUCTORS: CONDUCTORS SHALL BE AS SCHEDULED ON PANEL SCHEDULES. ALL POWER CONDUCTORS SHALL NOT BE SMALLER THAN #14 AWG (CU), OR #12 AWG (AL). CONTROL CIRCUIT CONDUCTORS SHALL NOT BE SMALLER THAN #18 AWG CU. CONDUCTORS SHALL BE CONTINUOUS FROM OUTLET TO OUTLET WITHOUT SPLICES EXCEPT WITHIN WIREWAY OR JUNCTION BOXES. MARK CONDUCTORS IN PANELS, PULL BOXES OR WIREWAYS AND TERMINAL STRIP TERMINALS FOR IDENTIFICATION OF CIRCUITS.
CONDUCTORS SHALL BE JOINED USING COMPRESSION SPLICES, EXCEPT THAT CONDUCTORS #10 AND SMALLER MAY BE JOINED USING WIRE NUT TYPE CONNECTORS. CONDUCTORS SHALL BE TERMINATED USING COMPRESSION OR PRESSURE-TYPE TERMINAL LUGS, OR IN PRESSURE TERMINALS. COMPRESSION SPLICES USED ON CONDUCTORS #10 AWG. AND SMALLER, SHALL BE THE SELF-INSULATED TYPE. OTHER SPLICES SHALL BE INSULATED USING 3M #33+ OR #88 PLASTIC TAPE. SPLICES IN WET LOCATIONS SHALL BE INSULATED WITH ELECTRICAL TAPE AND ENCAPSULATED WITH SCOTCHCAST OR EQUAL POTTING COMPOUND.
- PROVIDE AND INSTALL JUNCTION AND PULL BOXES WHERE INDICATED AND WHERE NECESSARY TO TERMINATE, TAP OFF, OR REDIRECT MULTIPLE CONDUIT RUNS, OF SIZE INDICATED OR AS REQUIRED BY NEC. WHERE FEEDER SPLICES ARE TO BE MADE, INSTALL BOXES LARGE ENOUGH TO PROVIDE AMPLE WORK SPACE.
- LIGHTING FIXTURES: LIGHTING FIXTURES SHALL BE AS INDICATED ON THE DRAWINGS, AND SHALL BE INSTALLED COMPLETE WITH LAMPS. FIXTURES WITH ADJUSTMENTS AFFECTING LIGHT DISTRIBUTION SHALL BE SET TO PROVIDE THE REQUIRED LIGHT PATTERNS PRIOR TO THE FINAL DEMONSTRATION TEST.
- TESTS: AFTER EACH SYSTEM HAS BEEN COMPLETED, A FUNCTIONAL TEST SHALL BE PERFORMED TO DEMONSTRATE THAT THE SYSTEM OPERATES IN ACCORDANCE WITH THE REQUIREMENTS OF THE DRAWINGS. THE TEST SHALL BE PERFORMED BY THE CONTRACTOR IN THE PRESENCE OF THE OWNER OR HIS REPRESENTATIVE.
- TERMINALS: ALL ELECTRICAL EQUIPMENT FURNISHED ON THIS PROJECT IS TO HAVE TERMINALS RATED FOR 75° C. OPERATION.



NOTE THIS IS AN REHAB OF AN EXISTING BUILDING WHICH HAS AN EXISTING SERVICE AND DISTRIBUTION EQUIPMENT. ALTERATIONS TO EXISTING BUILDING BEING OF SUCH NATURE THAT ALL FACETS OF THE WORK ARE IMPOSSIBLE TO DETAIL AND SPECIFY. IT IS THEREFORE SPECIFICALLY THE RESPONSIBILITY OF THE CONTRACTOR TO CAREFULLY EXAMINE THE EXISTING BUILDING AND FAMILIARIZE HIMSELF WITH THE CONDITIONS AND RELATE THESE CONDITIONS TO THE SCOPE OF THE PROPOSED NEW WORK. ALL BIDS ARE EXPECTED TO ENCOMPASS THE TOTAL WORK SCOPE NEEDED TO PLACE THE COMPLETED ELECTRICAL SYSTEMS IN WORKING CONDITION TO THE EXTENT OF THE PLANS.

1 FLOOR PLAN - POWER
SCALE: 1/4"=1'-0"

REV	DATE	DESCRIPTION
-----	------	-------------

PANEL SCHEDULE A																					
200 AMP, 120/208 VOLT, THREE PHASE, FOUR WIRE, M.L.D., 14000 AMPS MINIMUM A.I.C. BRACING, FLUSH MOUNTED, TYPE NEMA 1 ENCLOSURE																					
#	BKR.	WIRE AND CONDUIT					LOAD DESCRIPTION	NEUT.	LINE A	LINE B	LINE C	LOAD DESCRIPTION	WIRE AND CONDUIT				BKR.	#			
		COND.	NEUTRAL	GND	C. KEYS	KEYS							C.	GND	NEUTRAL	COND.					
1	15/1	#12	#12	#12	1/2	CHAL	HOOD LIGHTS H1,N1	1800	1800	-----	-----	LIGHTS BY OWNER	CHAL	1/2	#12	#12	#12	20/1	2		
3								1702	1702	-----	-----	LIGHTS BY OWNER	CHAL	1/2	#12	#12	#12	20/1	4		
5	15/3	#12	---	#12	1/2	CHAL	HOOD EXHAUST FAN #1	0	528	-----	528	LIGHTS BY OWNER	CHAL	1/2	#12	#12	#12	20/1	4		
7								828	828	-----	828	ICE FLAKER WITH BIN	CHAL	1/2	#12	#12	#12	15/1	6		
9								600	600	-----	600	BACK BAR CAB REFRIDGATED	CHAL	1/2	#12	#12	#12	15/1	8		
11	15/3	#12	---	#12	1/2	CHAL	HOOD EXHAUST FAN #2	0	312	-----	312	BACK BAR CAB REFRIDGATED	CHAL	1/2	#12	#12	#12	15/1	10		
13								1920	1920	-----	1920	DISHWASHER	CHAL	1/2	#12	#12	#12	20/1	12		
15	15/1	#12	#12	#12	1/2	CHAL	PIZZA PREP FRIDGE	0	312	-----	312	FROZEN DRINK MACHINE	CHAL	1/2	#12	#12	#12	20/1	14		
17	20/1	#12	#12	#12	1/2	CHAL	DECORATIVE LAMPS	720	720	-----	720	DRINK REMOTE CONDENSING	CHAL	1/2	#10	---	#10	30/2	16		
19	15/1	#12	#12	#12	1/2	CHAL	STONE HEARTH OVEN	564	564	-----	564	DRINK REMOTE CONDENSING	CHAL	1/2	#10	---	#10	30/2	16		
21								240	240	-----	240	PIZZA PREP FRIDGE	CHAL	1/2	#12	#12	#12	15/1	20		
23	25/3	#10	---	#10	1/2	CHAL	CONVECTION OVEN	0	2976	-----	2976	DRAFT BEER COOLER	CHAL	1/2	#12	#12	#12	15/1	22		
25								480	480	-----	480	DRAFT BEER COOLER	CHAL	1/2	#12	#12	#12	15/1	22		
27	15/1	#12	#12	#12	1/2	CHAL	PLANETARY MIXER	840	840	-----	840	GLASS AND PLATE CHILLER	CHAL	1/2	#12	#12	#12	15/1	24		
29	20/1	#12	#12	#12	1/2	CHAL	DISHWASHER	0	2976	-----	2976	DRAFT BEER COOLER	CHAL	1/2	#12	#12	#12	15/1	24		
31	15/1	#12	#12	#12	1/2	CHAL	REFRIDGERATED MERCHANDISE	888	888	-----	888	DRAFT BEER COOLER	CHAL	1/2	#12	#12	#12	15/1	26		
33	15/1	#12	#12	#12	1/2	CHAL	TEA BREWER	720	720	-----	720	BACK BAR CAB REFRIDGERATE	CHAL	1/2	#12	#12	#12	15/1	28		
35								600	600	-----	600	BACK BAR CAB REFRIDGERATE	CHAL	1/2	#12	#12	#12	15/1	28		
37								1920	1920	-----	1920	BACK BAR CAB REFRIDGERATE	CHAL	1/2	#12	#12	#12	15/1	28		
39	15/1	#12	#12	#12	1/2	CHAL	REFRIDGERATED MERCHANDISE	0	1092	-----	1092	COOLER REMOTE CONDENSER	CHAL	1/2	#12	---	#12	15/3	32		
41	15/2	#12	---	#12	1/2	CHAL	ICE CUBER	384	384	-----	384	COOLER REMOTE CONDENSER	CHAL	1/2	#12	---	#12	15/3	32		
43								1680	1680	-----	1680	COOLER REMOTE CONDENSER	CHAL	1/2	#12	---	#12	15/3	32		
45								0	1092	-----	1092	COOLER REMOTE CONDENSER	CHAL	1/2	#12	---	#12	15/3	32		
47								0	770	-----	770	EVAPORATOR	CHAL	1/2	#12	#12	#12	15/1	36		
49	15/2	#12	---	#12	1/2	CHAL	ICE CUBER	240	240	-----	240	EVAPORATOR	CHAL	1/2	#12	#12	#12	15/1	36		
51								0	770	-----	770	CONDENSING UNIT #1	CHAL	1/2	#12	---	#12	15/2	38		
53								0	759	-----	759	CONDENSING UNIT #1	CHAL	1/2	#12	---	#12	15/2	38		
55								0	770	-----	770	CONDENSING UNIT #1	CHAL	1/2	#12	---	#12	15/2	38		
57								1800	1800	-----	1800	PADDLE FANS	CHAL	1/2	#12	#12	#12	20/1	42		
59	15/1	#14	#14	#14	1/2	CHAL	ESPRESSO,CAPPUCCINO	1800	1800	-----	1800	PADDLE FANS	CHAL	1/2	#12	#12	#12	20/1	42		
61	15/1	#14	#14	#14	1/2	CHAL	ELECTRICAL JUICER	900	900	-----	900	SERVER RECEPTACLE	CHAL	1/2	#12	#12	#12	20/1	44		
63								290	290	-----	290	SERVER RECEPTACLE	CHAL	1/2	#12	#12	#12	20/1	44		
65								360	360	-----	360	SERVICE RECEPTACLE	CHAL	1/2	#12	#12	#12	20/1	46		
67								0	0	-----	0	SERVICE RECEPTACLE	CHAL	1/2	#12	#12	#12	20/1	46		
69	15/1	#14	#14	#14	1/2	CHAL	WASHING MACHINE	480	480	-----	480	TANKLESS WATER HEATER	CHAL	1/2	#14	#14	#14	15/1	48		
71								600	600	-----	600	TANKLESS WATER HEATER	CHAL	1/2	#14	#14	#14	15/1	48		
73	30/2	#10	---	#14	1/2	CHAL	DRYER	1440	1440	-----	1440	WALK IN COOLER LIGHT	CHAL	1/2	#14	#14	#14	15/1	50		
75								0	1297	-----	1297	WALK IN COOLER LIGHT	CHAL	1/2	#14	#14	#14	15/1	50		
77								0	3120	-----	3120	WALK IN COOLER LIGHT	CHAL	1/2	#14	#14	#14	15/1	50		
79								0	1297	-----	1297	CONDENSING UNIT #2	CHAL	1/2	#14	---	#14	20/2	52		
81								0	1297	-----	1297	CONDENSING UNIT #2	CHAL	1/2	#14	---	#14	20/2	54		
WIRE/CONDUIT KEY								18075	19996	24481	PEAK PHASE (A) UNBALANCED NEUTRAL LOAD AMPS = 97. AMPS										
L-TEMP RATING								62,552												NON DIVERSIFIED LOAD AT 208 VOLT, THREE PHASE = 173.8 AMPS	
C-CU WIRE																					
H-THWN																					
A-EMT																					
L-78-86 Deg. F.																					
PRINTED ON PANELS PROGRAM SERIAL NUMBER 2001.4001																					
REGISTERED TO - TODD W. CAREY AND ASSOCIATES OF THE CAROLINAS, PA																					

PANEL A DIVERSIFICATION CALCULATIONS	
RECEPTACLES (7)	1260 VA TOTAL
LIGHTING - FIRST 10 KVA AT 100% -	1260
LVAC LOAD AT 100% 6202 X 125% -	7753
MOTOR LOADS AT 100% -	4320
PLUS 25% OF THE LARGEST MOTOR -	649
MISC NON-CONTINUOUS LOADS AT 100% -	7320
KITCHEN EQUIPMENT (25) 37536 X 0.65 -	24398
TOTAL DIVERSIFIED PANEL LOAD	51612
LOAD AT 120/208V/3-PHASE/4-WIRE -	143.4A

PANEL B DIVERSIFICATION CALCULATIONS	
RECEPTACLES (32)	5760 VA TOTAL
LIGHTING - FIRST 10 KVA AT 100% -	5760
MOTOR LOADS AT 100% 850 X 125% -	1063
PLUS 25% OF THE LARGEST MOTOR -	687
MISC NON-CONTINUOUS LOADS AT 100% -	7230
TOTAL DIVERSIFIED PANEL LOAD	21164
LOAD AT 120/208V/3-PHASE/4-WIRE -	58.8A

PANEL SCHEDULE B																			
125 AMP, 120/208 VOLT, THREE PHASE, FOUR WIRE, M.L.D., 10000 AMPS MINIMUM A.I.C. BRACING, FLUSH MOUNTED, TYPE NEMA 1 ENCLOSURE																			
#	BKR.	WIRE AND CONDUIT					LOAD DESCRIPTION	NEUT.	LINE A	LINE B	LINE C	LOAD DESCRIPTION	WIRE AND CONDUIT					BKR.	#
		COND.	NEUTRAL	GND	C.	KEYS							KEYS	C.	GND	NEUTRAL	COND.		
1	20/1	#12	#12	#12	1/2	CHAL	BAR FANS	897	897	-----	-----	IN GROUND PLANTER LIGHT	CHAL	1/2	#12	#12	#12	20/1	2
3	20/1	#12	#12	#12	1/2	CHAL	DECK AREA FANS	850	850	-----	-----	WALL SIGNAGE	CHAL	1/2	#12	#12	#12	20/1	4
5	20/1	#12	#12	#12	1/2	CHAL	MOTORIZED ROLL UP DOOR	1200	1200	-----	-----	WALL SIGNAGE	CHAL	1/2	#12	#12	#12	20/1	6
7	20/1	#12	#12	#12	1/2	CHAL	MOTORIZED ROLL UP DOOR	864	864	-----	-----	WALL SIGNAGE	CHAL	1/2	#12	#12	#12	20/1	8
9	20/1	#12	#12	#12	1/2	CHAL	MOTORIZED ROLL UP DOOR	1200	1200	-----	-----	WALL SIGNAGE	CHAL	1/2	#12	#12	#12	20/1	10
11	20/1	#12	#12	#12	1/2	CHAL	MOTORIZED ROLL UP DOOR	864	864	-----	-----	WALL SIGNAGE	CHAL	1/2	#12	#12	#12	20/1	12
13	20/1	#12	#12	#12	1/2	CHAL	MOTORIZED ROLL UP DOOR	1200	1200	-----	-----	WALL SIGNAGE	CHAL	1/2	#12	#12	#12	20/1	14
15	20/1	#12	#12	#12	1/2	CHAL	MOTORIZED ROLL UP DOOR	864	864	-----	-----	WALL SIGNAGE	CHAL	1/2	#12	#12	#12	20/1	16
17	20/1	#12	#12	#12	1/2	CHAL	PDS	720	720	-----	-----	BARE RECEPTACLE	CHAL	1/2	#12	#12	#12	20/1	18
19							SPACE	864	864	-----	-----	BARE RECEPTACLE	CHAL	1/2	#12	#12	#12	20/1	20
21							SPACE	900	900	-----	-----	LDFT GF1 RECEPTACLE	CHAL	1/2	#12	#12	#12	20/1	22
23							SPACE	990	990	-----	-----	AUDID/VISUAL RACK #1	CHAL	1/2	#12	#12	#12	20/1	24
								1440	-----	-----	1440	AUDID/VISUAL RACK #2	CHAL	1/2	#12	#12	#12	20/1	24
WIRE/CONDUIT KEY								6115		6824		7788		PEAK PHASE (C) UNBALANCED NEUTRAL LOAD AMPS = 64.9 AMPS					
125A								L-TEMP RATING				20,787		NON DIVERSIFIED LOAD AT 208 VOLT, THREE PHASE = 57.6 AMPS					
								C-CU WIRE											
								H-THWN											
								CONDUIT TYPE		A-EMT									
								TEMP RATING		L-78-86 Deg. F.									
								CONDUIT TYPE											
								INSULATION											
								WIRING TYPE											
PRINTED ON PANELS PROGRAM SERIAL NUMBER 2001.4001																			
REGISTERED TO - TODD W. CAREY AND ASSOCIATES OF THE CAROLINAS, PA																			

PANEL NOTES:
* - THIS CIRCUIT IS ON A TIMER

												EQUIPMENT SCHEDULE									
ITEMNO	QUANTITY	CATEGORY	MTR	MODEL	VOLTAGE	PHASE	AMPS	CYCLE	HP	KW	ELECTRICAL		HOT WATER (IN)	HOT WATER CONN. HEIGHT(IN)	INDIRECT WASTE SIZE	DIRECT WASTE SIZE	PLUMBING			EQUIPMENT REMARKS	
											CONNECTION TYPE	NEMA					ELECTRICAL CONNECTION HEIGHT	COLD WATER (IN)	COLD WATER CONN. HEIGHT(IN)		DIRECT WASTE CONN. HEIGHT(IN)
1	2	PIZZA PREPARATION REFRIGERATOR	DEIFLED	18669PTMP	115		4.7														
3	6	SHELVING, WALL-MOUNTED	ADVANCE TABCO	WS-15-24																WALL BACKING REQUIRED 48" - 96" AFF.	
5	1	SHELVING, WALL-MOUNTED	CUSTOM	6" SHELVING																WALL BACKING REQUIRED 24" - 48" AFF.	
6	1	PASS THRU SHELF	ADVANCE TABCO	PA-24-TZ																MOUNTED ON 52" WALL	
6.1	4	DECORATIVE LAMP	HATCO	DLH-400-RR	120	1	60		.375	.375	DIRECT	CEILING								MOUNTED FROM CEILING	
7	1	HAND SINK	KROWNE	HS-15									1/2"	18"	1/2"	18"	1-1/2"	15"		WALL BACKING REQUIRED 24" - 48" AFF.	
8	1	RANGE, 24", 4 OPEN BURNERS	VULCAN	24S-4B																	
9	1	STONE HEARTH OVEN, GAS & WOOD	WOOD STONE	WS-SR-4343-RFG-W	120	1	2	60			DIRECT	24"									
	1	EXHAUST FAN	WOOD STONE	WS-GSV-012							SUBMITTAL	SUBMITTAL								OVEN TO BE DIRECT VENTED. SEE MANUFACTURER SPECIFICATIONS. LOCATION OF FANS TO BE DETERMINED BY MECHANICAL ENGINEER. INTERCONNECTING WIRING TO BE COMPLETED BY ELECTRICAL CONTRACTOR. SEE EXHAUST FAN SUBMITTAL FOR SPECIFICATIONS AND DETAILS.	
10	1	GAS FLOOR FRYER	DEAN	SR162G																	
17	1	CHARBROILER, WOOD BURNING	AZTEC GRILL	ST-42																	
20	1	EXHAUST HOOD	CAPTIVE-AIRE	EXHAUST HOOD							SUBMITTAL	SUBMITTAL								LOCATION OF FANS TO BE DETERMINED BY MECHANICAL ENGINEER. INTERCONNECTING WIRING TO BE COMPLETED BY ELECTRICAL CONTRACTOR. SEE EXHAUST HOOD SUBMITTAL FOR SPECIFICATIONS AND DETAILS.	
22	1	EXHAUST HOOD	CAPTIVE-AIRE	EXHAUST HOOD							SUBMITTAL	SUBMITTAL								LOCATION OF FANS TO BE DETERMINED BY MECHANICAL ENGINEER. INTERCONNECTING WIRING TO BE COMPLETED BY ELECTRICAL CONTRACTOR. SEE EXHAUST HOOD SUBMITTAL FOR SPECIFICATIONS AND DETAILS.	
24	10	SHELVING, WALL-MOUNTED	CUSTOM	SHELVING, WALL-MOUNTED																	
27	1	WORK TABLE, 48" STAINLESS STEEL TOP	JOHN BOOS	FBL54818-X																	
27.1	1	DROP-IN SINK	ADVANCE TABCO	D-I-10-1X									1/2"	18"	1/2"	18"	1-1/2"			WALL BACKING REQUIRED 24" - 48" AFF.	
28	1	INGREDIENT BIN	WINHOLT	148PB																	
30	1	SHELVING, WALL-MOUNTED	CUSTOM	WALL SHELF																	
31	2	SHELVING, WALL-MOUNTED	ADVANCE TABCO	WS-15-48																WALL BACKING REQUIRED 48" - 96" AFF.	
32	1	SHELVING, WALL-MOUNTED	ADVANCE TABCO	WS-15-60																WALL BACKING REQUIRED 48" - 96" AFF.	
34	1	WORK TABLE, BAKERS TOP	JOHN BOOS	DNB15																WALL BACKING REQUIRED 24" - 48" AFF.	
35	1	WORK TABLE DRAWER	JOHN BOOS	DB11																	
36	1	CONVECTION OVEN, ELECTRIC	SOUTHBEND	TYES10SC	208	3	20.8	50/60	1/2	7.5	DIRECT	18"									
37	1	PLANETARY MIXER	GLOBE	SP20	115	1	6.0	60	1/2		CORD & PLUG	5-15P									
40	1	WALK-IN COOLER	BALLY	WALK-IN COOLER							SUBMITTAL	SUBMITTAL								LOCATION OF REMOTE CONDENSER TO BE DETERMINED BY ENGINEERING / SEE WALK-IN SUBMITTALS FOR SPECIFICATIONS AND DETAILS.	
41	2	WIRE SHELVING	OLYMPIC	J244BK																	
42	1	WIRE SHELVING	OLYMPIC	J244BK																	
43	1	WIRE SHELVING	OLYMPIC	J184BK																	
44	1	STEAM TABLE / FOOD PAN RACK	CHANNEL	LPHS-19																	
45	1	BUN / SHEET PAN RACK	ADVANCE TABCO	PR20-3W																	
46	1	DUNNAGE RACK	NEW AGE	2003																	
47	1	WIRE SHELVING	OLYMPIC	J184BK																	
50	1	CORNER SINK, (3) THREE COMPARTMENT	ADVANCE TABCO	FC-60-180-X																	
50.1	2	WALL / SPLASH MOUNT FAUCET	KROWNE	14-814L									1/2"	18"	1/2"	18"	(3) 1-1/2"			WALL BACKING REQUIRED 24" - 48" AFF.	
52	1	WIRE SHELVING	OLYMPIC	J18BK																	
53	1	WIRE SHELVING	OLYMPIC	J18BK																WALL BACKING REQUIRED 48" - 96" AFF.	
56	1	SOILED DISHTABLE	ADVANCE TABCO	DTS-K60-80L									1/2"	18"	1/2"	18"	1-1/2"			WALL BACKING REQUIRED 24" - 48" AFF.	
56.1	1	PRE-RINSE FAUCET ASSEMBLY	T&S BRASS	B-0133																	
57	1	DISHWASHER, DOOR TYPE	CMA DISHMACHINES	H4	115	1	16.0	60	1		DIRECT	66"		1/2"	18"	3/4"	2"				
58	1	CLEAN DISHTABLE	ADVANCE TABCO	DTG-S60-48R-X																BY LEASE VERIFY SPECIFICATIONS	
60	4	WIRE SHELVING	OLYMPIC	J184BK																WALL BACKING REQUIRED 24" - 48" AFF.	
61	1	DISHTABLE SORTING SHELF	ADVANCE TABCO	DT-6R-10-X																WALL BACKING REQUIRED 48" - 96" AFF.	
62	1	DISHTABLE SORTING SHELF	ADVANCE TABCO	DT-6R-12-X																WALL BACKING REQUIRED 48" - 96" AFF.	
64	1	PASS-THRU SHELF	ADVANCE TABCO	PA-18-48																WALL BACKING REQUIRED 48" - 96" AFF.	
65	1	HAND SINK	KROWNE	HS-15									1/2"	18"	1/2"	18"	1-1/2"	15"		MOUNTED ON LOW WALL	
69	1	ESPRESSO CAPPUCCINO MACHINE	NUOVA SIMONELLI	APP1A II IGR SEMI	110	1	15	60		1.5	CORD & PLUG	5-15P								WALL BACKING REQUIRED 24" - 48" AFF.	
70	1	BEVERAGE TABLE	CUSTOM	BEVERAGE TABLE																BY VENDOR / VERIFY SPECIFICATIONS	
70.1	1	DROP-IN ICE BIN	KROWNE	D278																WALL BACKING REQUIRED 48" - 96" AFF.	
71	1	SHELVING, WALL-MOUNTED	ADVANCE TABCO	WS-15-36																WALL BACKING REQUIRED 48" - 96" AFF.	
71.1	1	SHELVING, WALL-MOUNTED	ADVANCE TABCO	WS-15-60																WALL BACKING REQUIRED 48" - 96" AFF.	
72	1	FAUCET, KETTLE / HOT FILLER	T&S BRASS	B-0601									1/2"	48"							
73	1	REFRIGERATED MERCHANDISER	SATURN	F8GM23-B	115	1	3.2	60	1/6		CORD & PLUG	5-15P									
74	1	TEA BREWER	BUNN	41400-0002	120	1	14	60		1.7	CORD & PLUG	5-15P		1/2"		50"					
75	2	TEA DISPENSER	BUNN	19000-0001	208-230	1	7.4	60			DIRECT	66"		1/2"	60"						
75.2	1	ICE CUBER	HOSHIZAKI	KM-650MRH													3/4"				
			HOSHIZAKI	KM-650MRH													3/8"				
	1	REMOTE CONDENSER UNIT	HOSHIZAKI	URC-5P	115	1		60			DIRECT	TBD									
	2	ICE BIN FOR ICE MACHINES	HOSHIZAKI	B-11505S																LOCATION OF REMOTE CONDENSER TO BE DETERMINED BY ENGINEERING / ROOF RAILS TO BE SUPPLIED BY CONTRACTOR.	
77	1	JUICER, ELECTRIC	ZUMMO	C840C	110	1		60		29	CORD & PLUG	5-15P								3/4"	
80	1	MOP SINK	ADVANCE TABCO	9-OP-20-X																	
80.1	1	SERVICE FAUCET	KROWNE	16-127									1/2"	36"	1/2"	36"		2"	4"	WALL BACKING REQUIRED 0" - 48" AFF.	
82	3	FLOOR TROUGH	ADVANCE TABCO	FTG-1248																	
84	4	HOSE BIB FAUCET	T&S BRASS	B-0702									1/2"	18"	3/8"	18"	4"		-4"		
81	1	HAND SINK	GLASTENDER	IBA-12-D										18"	3/8"	18"	1-1/2"	15"		BY OTHERS / VERIFY SPECIFICATIONS	
82	2	ICE BIN	GLASTENDER	IBA-12																	
83	1	ICE BIN WITH BOTTLE WELLS	GLASTENDER	CB4-48	115	1	6.9	60			CORD & PLUG	5-15P					1-1/2"			WALL BACKING REQUIRED 0" - 40" AFF.	
86	1	ICE FLAKER WITH BIN	HOSHIZAKI	F-338BAJ									1/2"	12"			3/4"			WALL BACKING REQUIRED 0" - 40" AFF.	
88	1	BACKBAR COOLER, FRONT BREATHING	CONTINENTAL REFRIGERATOR	BBCT9S-SS	115	1	5.33	60	1/3		CORD & PLUG	5-15P									
B10	3	BOTTLE DISPLAY	GLASTENDER	LDA-18S																	
B11	3	GLASS RACK	GLASTENDER	D8GP-16																WALL BACKING REQUIRED 0" - 40" AFF.	
B12	1	HAND SINK	GLASTENDER	HSB-12																WALL BACKING REQUIRED 0" - 40" AFF.	
B14	1	UNDERBAR ADD-ON UNIT	GLASTENDER	C-DW-12									3/8"	18"	3/8"	18"	1-1/2"	15"		WALL BACKING REQUIRED 0" - 40" AFF.	
B15	1	DISHWASHER, UNDERCOUNTER	CMA DISHMACHINES	1-1X	115	1	16.0	60			CORD & PLUG	5-15P								BY LEASE / VERIFY SPECIFICATIONS	
B17	1	CORNER ANGLE FILLER	GLASTENDER	ICCA-45										12"						WALL BACKING REQUIRED 0" - 40" AFF.	
B18	4	ICE BIN	GLASTENDER	IBA-6																WALL BACKING REQUIRED 0" - 40" AFF.	
B19	1	CORNER DRAIN BOARD	GLASTENDER	CUSTOM																WALL BACKING REQUIRED 0" - 40" AFF.	
B21	2	ICE BIN	GLASTENDER	IBA-18																WALL BACKING REQUIRED 0" - 40" AFF.	
B22	1	WASTE CABINET	GLASTENDER	SWA-12									3/8"		3/8"					WALL BACKING REQUIRED 0" - 40" AFF.	
B24	4	DRAFT BEER SYSTEM PARTS	MICRO MATIC	MM-5621									1/2"		1/2"						
B25	4	GLASS FILLER	T&S BRASS	B-1210-01									1/2"		1/2"						
B27	1	FROZEN DRINK MACHINE, NON-CARBONATED, CYLINDER TYPE	FROSTY FACTORY	115R 2/1	120	1	6.0	60	3		CORD & PLUG	5-15P									
	1	REMOTE CONDENSOR	FROSTY FACTORY		208	1	22.0	60			DIRECT	TBD								LOCATION OF REMOTE CONDENSER TO BE DETERMINED BY ENGINEERING / SEE WALK-IN SUBMITTALS FOR SPECIFICATIONS AND DETAILS.	
	1	REMOTE FLEXIBLE INSTALL KIT 1/2"	FROSTY FACTORY	FLEX 2-1																	
	1	STEEL CONDENSING UNIT COVER	FROSTY FACTORY	FP881																	
B30	1	DRAFT BEER COOLER	CONTINENTAL REFRIGERATOR	KC24-SS	115	1	1/5		1/5		CORD & PLUG	5-15P									
B31	1	GLASS FROSTER	TURBO AIR	TBC-24SD-GF-N6	115	1	.9	60	1/8		CORD & PLUG	5-15P									
B33	1	DRAFT BEER COOLER, FRONT BREATHING	CONTINENTAL REFRIGERATOR	KC50-SS	115	1	1/3		1/3		CORD & PLUG	5-15P									
	1		CONTINENTAL REFRIGERATOR		115	1	3.77	60	1/3		CORD & PLUG	5-15P									
B35	1	BACKBAR COOLER, FRONT BREATHING	CONTINENTAL REFRIGERATOR	BBCT9S-SS	115	1	5.33	60	1/3		CORD & PLUG	5-15P									
B37	1	BACKBAR COOLER, FRONT BREATHING	CONTINENTAL REFRIGERATOR	BBCT50-SS	115	1	3.77	60	1/3		CORD & PLUG	5-15P									
B1	1	POINT OF SALE	POS WALL								BY VENDOR	BY VENDOR								BY OTHERS / VERIFY SPECIFICATIONS	
P2	3	POINT OF SALE	CUSTOM FAB	POS COUNTER							BY VENDOR	BY VENDOR								BY OTHERS / VERIFY SPECIFICATIONS	

1 EQUIPMENT SCHEDULE

E4